



# Product & Packaging Specifications

JULY  
2025



✕  
WHITE  
LABEL

# TABLE OF CONTENTS

## PIZZAS

Premium 10" Cheese	03
Premium 10" Pepperoni	04
Cheese 10"	05
Pepperoni 10"	06
Cheese 16"	07
Pepperoni 16"	08
Di Fara Cheese 16"	09
Di Fara Pepperoni 16"	10
Pizza Crust 12"	11

## SMALL PLATES

Crispy Chicken Wings	12
Chicken Tenders	13
Crispy Brussels Sprouts	14
Cheese Quesadilla	15
Mac & Cheese	16
French Fries	17
Garlic Breadsticks	18
Roasted Red Bliss Potatoes	19

## PASTA

Rigatoni Pomodoro	20
Penne alla Vodka	21
Rigatoni Bolognese	22
Cavatappi Alfredo	23

## ENTRÉES

Chicken Parmigiana	24
Cheesesteak	25
Smash Burger	26
Crispy Chicken Filet	27
NY Strip	28
NY Strip (New)	29
Seared Sirloin	30
Seared Sirloin (New)	31

## BREAKFAST DELIGHTS

Bacon, Egg & Cheese Sandwich	32
Vegetarian Sandwich	33

## PACKAGING SPECIFICATIONS

Pizza Packaging	34
Non-Pizza Packaging	37

(V) - Vegan

(VG) - Vegetarian

(GF) - Gluten free

(DF) - Dairy free



# Premium 10" Cheese (VG)

## PRODUCT INFORMATION

<b>Distributed by</b> Wonder Group, Inc New York, NY 10006	<b>SKU</b> 8806887
<b>GTIN</b> 00850052739720	<b>UPC</b> 850052739720
<b>Cook Method</b> Cook from frozen. Cook at 550°F in TurboChef double batch oven	<b>Storage Method</b> Frozen at 0°F
<b>Cook Time</b> 2:00 minutes for 1 pizza 2:30 minutes for 2 pizzas	<b>Shelf Life - Frozen</b> 15 months
<b>Required Smallware</b> Pizza platter, pizza cutter, kitchen scissors	<b>Shelf Life - Defrosted</b> N/A - cook from frozen
	<b>Defrost Time Before Cooking</b> N/A - cook from frozen



## SHIPPING INFORMATION

<b>Item Weight</b> 348g	<b>Case Cube</b> 0.88 cu ft
<b>Item Quantity in Case</b> 15 pieces per case	<b>Case Dimensions</b> 11" x 11.50" x 12"
<b>Case Net Weight</b> 11.50 lbs	<b>Case TI-HI</b> 12 x 6
<b>Case Gross Weight</b> 13.70 lbs	<b>Pallet Gross Weight</b> 1,026.40 lbs
<b>Cases Per Pallet</b> 72	

## INGREDIENT LIST

<b>Ingredients</b> Cheese Pizza (Crust [Wheat Flour, Water, Sunflower Oil, Salt, Yeast], Sauce [Tomato Puree (Diced Tomatoes, Tomato Puree), Sunflower Oil, Salt], Mozzarella Cheese [Pasteurized Part Skim Milk, Cheese Cultures, Salt, Enzymes], Sunflower Oil, Parmesan Cheese [Pasteurized Part-Skim Cow's Milk, Cheese Cultures, Salt, Enzymes, Powdered Cellulose (to prevent caking)])
<b>Allergens</b> Contains Milk, Wheat
<b>Suggested Accompaniments</b> None

Nutrition Facts			
45 (15 x 10" pizzas) servings per container			
Serving size		1/3 pizza (116 g)	
	1/3 pizza	1 whole pizza	
Calories	260	790	
	% Daily Value*	% Daily Value*	
Total Fat	9g	12%	35%
Saturated Fat	3g	15%	45%
Trans Fat	0g		0.5g
Cholesterol	15mg	5%	40mg
Sodium	590mg	26%	1770mg
Total Carbohydrate	34g	12%	101g
Dietary Fiber	1g	4%	4g
Total Sugars	1g		4g
Includes Added Sugars	0g	0%	0g
Protein	10g		32g
Vitamin D	0mcg	0%	0mcg
Calcium	180mg	15%	530mg
Iron	0.7mg	4%	2mg
Potassium	180mg	4%	530mg

- Notes**
- Our dishes are made in kitchens, in cooking processes, and on equipment shared with milk, eggs, fish, shellfish, peanuts, tree nuts, wheat, soy, and sesame. Fried items are prepared in shared frying oil. Our gluten-free items are not suitable for individuals with celiac disease or severe gluten sensitivity.
  - Suggested accompaniments are not included in the Ingredient, Allergen and Nutritional Facts List.

# Premium 10" Pepperoni

## PRODUCT INFORMATION

<b>Distributed by</b> Wonder Group, Inc New York, NY 10006	<b>SKU</b> 8806886
<b>GTIN</b> 00850052739737	<b>UPC</b> 850052739737
<b>Cook Method</b> Cook from frozen. Cook at 550°F in TurboChef double batch oven	<b>Storage Method</b> Frozen at 0°F
<b>Cook Time</b> 2:00 minutes for 1 pizza 2:30 minutes for 2 pizzas	<b>Shelf Life - Frozen</b> 9 months
<b>Required Smallware</b> Pizza platter, pizza cutter, kitchen scissors	<b>Shelf Life - Defrosted</b> N/A - cook from frozen
	<b>Defrost Time Before Cooking</b> N/A - cook from frozen



## SHIPPING INFORMATION

<b>Item Weight</b> 398g	<b>Case Cube</b> 0.88 cu ft
<b>Item Quantity in Case</b> 15 pieces per case	<b>Case Dimensions</b> 11" x 11.50" x 12"
<b>Case Net Weight</b> 13.15 lbs	<b>Case TI-HI</b> 12 x 6
<b>Case Gross Weight</b> 15.70 lbs	<b>Pallet Gross Weight</b> 1,170.40 lbs
<b>Cases Per Pallet</b> 72	

## INGREDIENT LIST

**Ingredients**  
Pepperoni Pizza (Crust [Wheat Flour, Water, Sunflower Oil, Salt, Yeast], Sauce [Tomato Puree (Diced Tomatoes, Tomato Puree), Sunflower Oil, Salt], Mozzarella Cheese [Pasteurized Part Skim Milk, Cheese Cultures, Salt, Enzymes], Pepperoni [Pork, Beef, Salt, Water, Dextrose, Spices, Lactic Acid Starter Culture, Sodium Ascorbate, Oleoresin of Paprika, Garlic Powder, Sodium Nitrite, BHA, BHT, Citric Acid, In Collagen Casing], Sunflower Oil, Parmesan Cheese [Pasteurized Part-Skim Cow's Milk, Cheese Cultures, Salt, Enzymes, Powdered Cellulose (to prevent caking)])

**Allergens**  
Contains Milk, Wheat

**Suggested Accompaniments**  
None

Nutrition Facts			
45 (15 x 10" pizzas) servings per container			
Serving size		1/3 pizza (133 g)	
Calories		1/3 pizza	1 whole pizza
	% Daily Value*	340	1020
Total Fat	16g	21%	49g 63%
Saturated Fat	6g	30%	17g 85%
Trans Fat	0g		1g
Cholesterol	30mg	10%	95mg 32%
Sodium	890mg	39%	2680mg 117%
Total Carbohydrate	34g	12%	101g 37%
Dietary Fiber	1g	4%	4g 14%
Total Sugars	1g		4g
Includes Added Sugars	0g	0%	0g 0%
Protein	14g		42g
Vitamin D	0mcg	0%	0mcg 0%
Calcium	180mg	15%	530mg 40%
Iron	0.7mg	4%	2mg 10%
Potassium	180mg	4%	530mg 10%

- Notes**
- Our dishes are made in kitchens, in cooking processes, and on equipment shared with milk, eggs, fish, shellfish, peanuts, tree nuts, wheat, soy, and sesame. Fried items are prepared in shared frying oil. Our gluten-free items are not suitable for individuals with celiac disease or severe gluten sensitivity.
  - Suggested accompaniments are not included in the Ingredient, Allergen and Nutritional Facts List.



# Cheese 10" (VG)

## PRODUCT INFORMATION

<b>Distributed by</b> Wonder Group, Inc New York, NY 10006	<b>SKU</b> 8804424
<b>GTIN</b> 00850052739003	<b>UPC</b> 850052739003
<b>Cook Method</b> Cook from frozen. Cook at 550°F in TurboChef double batch oven	<b>Storage Method</b> Frozen at 0°F
<b>Cook Time</b> 2:00 minutes for 1 pizza 2:15 minutes for 2 pizzas	<b>Shelf Life - Frozen</b> 365 days
<b>Required Smallware</b> Pizza platter, pizza cutter, kitchen scissors	<b>Shelf Life - Defrosted</b> N/A - cook from frozen
	<b>Defrost Time Before Cooking</b> N/A - cook from frozen



## SHIPPING INFORMATION

<b>Item Weight</b> 305g	<b>Case Cube</b> 0.54 cu ft
<b>Item Quantity in Case</b> 10 pieces per case	<b>Case Dimensions</b> 10.75" x 10.75" x 8"
<b>Case Net Weight</b> 6.73 lbs	<b>Case TI-HI</b> 12 x 7
<b>Case Gross Weight</b> 7.66 lbs	<b>Pallet Gross Weight</b> 683.23 lbs
<b>Cases Per Pallet</b> 84	

## INGREDIENT LIST

<b>Ingredients</b> Flour, Water, Mozzarella Cheese (Pasteurized Milk, Salt, Rennet, Lactic Ferments), Crushed Tomatoes (Tomatoes, Tomato Puree, Salt, Citric Acid [as acidity regulator]), Olive Oil, Enriched Durum Flour (Durum Wheat Flour, Niacin, Ferrous Sulfate, Thiamin Mononitrate, Riboflavin, Folic Acid), Grated Parmesan Cheese (Milk, Cultures, Salt, Enzymes), Salt, Canola Oil, Sunflower Lecithin, Yeast, Sugar, Guar Gum.
<b>Allergens</b> Contains Milk, Wheat
<b>Suggested Accompaniments</b> None

Nutrition Facts	
10 servings per container	
Serving size	1 Pizza (305g)
Amount per serving	
Calories	630
% Daily Value*	
Total Fat 22g	28%
Saturated Fat 10g	50%
Trans Fat 0g	
Cholesterol 40mg	13%
Sodium 1700mg	74%
Total Carbohydrate 74g	27%
Dietary Fiber 1g	4%
Total Sugars 3g	
Includes 1g Added Sugars	2%
Protein 32g	
Vitamin D 0mcg	0%
Calcium 240mg	20%
Iron 1mg	6%
Potassium 230mg	4%
*The % Daily Value tells you how much a nutrient in a serving of food contributes to a daily diet. 2,000 calories a day is used for general nutrition advice.	

- Notes**
- Our dishes are made in kitchens, in cooking processes, and on equipment shared with milk, eggs, fish, shellfish, peanuts, tree nuts, wheat, soy, and sesame. Fried items are prepared in shared frying oil. Our gluten-free items are not suitable for individuals with celiac disease or severe gluten sensitivity.
  - Suggested accompaniments are not included in the Ingredient, Allergen and Nutritional Facts List.

# Pepperoni 10"

## PRODUCT INFORMATION

<b>Distributed by</b> Wonder Group, Inc New York, NY 10006	<b>SKU</b> 8804446
<b>GTIN</b> 00850052739027	<b>UPC</b> 850052739027
<b>Cook Method</b> Cook from frozen. Cook at 550°F in TurboChef double batch oven	<b>Storage Method</b> Frozen at 0°F
<b>Cook Time</b> 2:00 minutes for 1 pizza 2:15 minutes for 2 pizzas	<b>Shelf Life - Frozen</b> 365 days
<b>Required Smallware</b> Pizza platter, pizza cutter, kitchen scissors	<b>Shelf Life - Defrosted</b> N/A - cook from frozen
	<b>Defrost Time Before Cooking</b> N/A - cook from frozen



## SHIPPING INFORMATION

<b>Item Weight</b> 355g	<b>Case Cube</b> 0.54 cu ft
<b>Item Quantity in Case</b> 10 pieces per case	<b>Case Dimensions</b> 10.75" x 10.75" x 8"
<b>Case Net Weight</b> 7.83 lbs	<b>Case TI-HI</b> 12 x 7
<b>Case Gross Weight</b> 8.76 lbs	<b>Pallet Gross Weight</b> 775.63 lbs
<b>Cases Per Pallet</b> 84	

## INGREDIENT LIST

**Ingredients**  
Flour, Water, Mozzarella Cheese (Pasteurized Milk, Salt, Rennet, Lactic Ferments), Crushed Tomatoes (Tomatoes, Tomato Puree, Salt, Citric Acid [as acidity regulator]), Pepperoni (Pork, Beef, Salt, Contains 2% or less of Water, Dextrose, Spices, Lactic Acid Starter Culture, Sodium Ascorbate, Oleoresin of Paprika, Garlic Powder, Sodium Nitrite, BHA, BHT, Citric Acid), Olive Oil, Enriched Durum Flour (Durum Wheat Flour, Niacin, Ferrous Sulfate, Thiamin Mononitrate, Riboflavin, Folic Acid), Grated Parmesan Cheese (Milk, Cultures, Salt, Enzymes), Salt, Canola Oil, Sunflower Lecithin, Yeast, Sugar, Guar Gum.

**Allergens**  
Contains Milk, Wheat

**Suggested Accompaniments**  
None

## Nutrition Facts

10 servings per container	
<b>Serving size</b>	<b>1 Pizza (355g)</b>
<b>Amount per serving</b>	
<b>Calories</b>	<b>880</b>
<b>% Daily Value*</b>	
<b>Total Fat</b> 45g	<b>58%</b>
Saturated Fat 19g	<b>95%</b>
Trans Fat 0g	
<b>Cholesterol</b> 95mg	<b>32%</b>
<b>Sodium</b> 2590mg	<b>113%</b>
<b>Total Carbohydrate</b> 74g	<b>27%</b>
Dietary Fiber 1g	<b>4%</b>
Total Sugars 3g	
Includes 1g Added Sugars	<b>2%</b>
<b>Protein</b> 41g	
Vitamin D 0mcg	<b>0%</b>
Calcium 240mg	<b>20%</b>
Iron 2mg	<b>10%</b>
Potassium 398mg	<b>8%</b>
*The % Daily Value tells you how much a nutrient in a serving of food contributes to a daily diet. 2,000 calories a day is used for general nutrition advice.	

- Notes**
- Our dishes are made in kitchens, in cooking processes, and on equipment shared with milk, eggs, fish, shellfish, peanuts, tree nuts, wheat, soy, and sesame. Fried items are prepared in shared frying oil. Our gluten-free items are not suitable for individuals with celiac disease or severe gluten sensitivity.
  - Suggested accompaniments are not included in the Ingredient, Allergen and Nutritional Facts List.

# Cheese 16" (VG)

## PRODUCT INFORMATION

<b>Distributed by</b> Wonder Group, Inc New York, NY 10006	<b>SKU</b> 8804425
<b>GTIN</b> 00850052739058	<b>UPC</b> 850052739058
<b>Cook Method</b> Cook from frozen. Cook at 550°F in TurboChef double batch oven	<b>Storage Method</b> Frozen at 0°F
<b>Cook Time</b> 2:30 for full bake 2:00 for par-bake (for displays) 0:20 for reheating per slice	<b>Shelf Life - Frozen</b> 365 days
<b>Required Smallware</b> Pizza platter, pizza cutter, kitchen scissors	<b>Shelf Life - Defrosted</b> N/A - cook from frozen
	<b>Defrost Time Before Cooking</b> N/A - cook from frozen



## SHIPPING INFORMATION

<b>Item Weight</b> 824g	<b>Case Cube</b> 1.95 cu ft
<b>Item Quantity in Case</b> 10 pieces per case	<b>Case Dimensions</b> 16.75" x 16.75" x 12"
<b>Case Net Weight</b> 18.17 lbs	<b>Case TI-HI</b> 4 x 5
<b>Case Gross Weight</b> 22.50 lbs	<b>Pallet Gross Weight</b> 490.01 lbs
<b>Cases Per Pallet</b> 20	

## INGREDIENT LIST

<b>Ingredients</b> Flour, Mozzarella Cheese (Pasteurized Milk, Salt, Rennet, Lactic Ferments), Crushed Tomatoes (Tomatoes, Tomato Puree, Salt, Citric Acid [as acidity regulator]), Water, Grated Parmesan Cheese (Milk, Cultures, Salt, Enzymes), Salt, Olive Oil, Enriched Durum Flour (Durum Wheat Flour, Niacin, Ferrous Sulfate, Thiamin Mononitrate, Riboflavin, Folic Acid), Canola Oil, Sugar, Sunflower Lecithin, Yeast, Guar Gum.
<b>Allergens</b> Contains Milk, Wheat
<b>Suggested Accompaniments</b> None

## Nutrition Facts

80 servings per container	
<b>Serving size</b>	<b>1/8 Pizza (103g)</b>
<b>Amount per serving</b>	
<b>Calories</b>	<b>200</b>
<b>% Daily Value*</b>	
<b>Total Fat</b> 7g	<b>9%</b>
Saturated Fat 4g	<b>20%</b>
Trans Fat 0g	
<b>Cholesterol</b> 15mg	<b>5%</b>
<b>Sodium</b> 580mg	<b>25%</b>
<b>Total Carbohydrate</b> 22g	<b>8%</b>
Dietary Fiber 1g	<b>4%</b>
<b>Total Sugars</b> 1g	
Includes 0g Added Sugars	<b>0%</b>
<b>Protein</b> 11g	
Vitamin D 0mcg	<b>0%</b>
Calcium 98mg	<b>8%</b>
Iron 0mg	<b>0%</b>
<b>Potassium</b> 89mg	<b>2%</b>
*The % Daily Value tells you how much a nutrient in a serving of food contributes to a daily diet. 2,000 calories a day is used for general nutrition advice.	

- Notes**
- Our dishes are made in kitchens, in cooking processes, and on equipment shared with milk, eggs, fish, shellfish, peanuts, tree nuts, wheat, soy, and sesame. Fried items are prepared in shared frying oil. Our gluten-free items are not suitable for individuals with celiac disease or severe gluten sensitivity.
  - Suggested accompaniments are not included in the Ingredient, Allergen and Nutritional Facts List.



# Pepperoni 16"

## PRODUCT INFORMATION

<b>Distributed by</b> Wonder Group, Inc New York, NY 10006	<b>SKU</b> 8804449
<b>GTIN</b> 00850052739065	<b>UPC</b> 850052739065
<b>Cook Method</b> Cook from frozen. Cook at 550°F in TurboChef double batch oven	<b>Storage Method</b> Frozen at 0°F
<b>Cook Time</b> 2:30 for full bake 2:00 for par-bake (for displays) 0:20 for reheating per slice	<b>Shelf Life - Frozen</b> 365 days
<b>Required Smallware</b> Pizza platter, pizza cutter, kitchen scissors	<b>Shelf Life - Defrosted</b> N/A - cook from frozen
	<b>Defrost Time Before Cooking</b> N/A - cook from frozen



## SHIPPING INFORMATION

<b>Item Weight</b> 940g	<b>Case Cube</b> 1.95 cu ft
<b>Item Quantity in Case</b> 10 pieces per case	<b>Case Dimensions</b> 16.75" x 16.75" x 12"
<b>Case Net Weight</b> 20.72 lbs	<b>Case TI-HI</b> 4 x 5
<b>Case Gross Weight</b> 25.06 lbs	<b>Pallet Gross Weight</b> 541.15 lbs
<b>Cases Per Pallet</b> 20	

## INGREDIENT LIST

<b>Ingredients</b> Flour, Mozzarella Cheese (Pasteurized Milk, Salt, Rennet, Lactic Ferments), Crushed Tomatoes (Tomatoes, Tomato Puree, Salt, Citric Acid [as acidity regulator]), Water, Pepperoni (Pork, Beef, Salt, Contains 2% or less of Water, Dextrose, Spices, Lactic Acid Starter Culture, Sodium Ascorbate, Oleoresin of Paprika, Garlic Powder, Sodium Nitrite, BHA, BHT, Citric Acid), Grated Parmesan Cheese (Milk, Cultures, Salt, Enzymes), Salt, Olive Oil, Enriched Durum Flour (Durum Wheat Flour, Niacin, Ferrous Sulfate, Thiamin Mononitrate, Riboflavin, Folic Acid), Canola Oil, Sugar, Sunflower Lecithin, Yeast, Guar Gum.
<b>Allergens</b> Contains Milk, Wheat
<b>Suggested Accompaniments</b> None

## Nutrition Facts

80 servings per container	
<b>Serving size</b>	<b>1/8 pizza (118g)</b>
<b>Amount per serving</b>	
<b>Calories</b>	<b>280</b>
<b>% Daily Value*</b>	
<b>Total Fat</b> 14g	<b>18%</b>
Saturated Fat 7g	<b>35%</b>
Trans Fat 0g	
<b>Cholesterol</b> 30mg	<b>10%</b>
<b>Sodium</b> 850mg	<b>37%</b>
<b>Total Carbohydrate</b> 22g	<b>8%</b>
Dietary Fiber 1g	<b>4%</b>
Total Sugars 1g	
Includes 0g Added Sugars	<b>0%</b>
<b>Protein</b> 14g	
Vitamin D 0mcg	<b>0%</b>
Calcium 98mg	<b>8%</b>
Iron 1mg	<b>6%</b>
<b>Potassium</b> 140mg	<b>2%</b>
*The % Daily Value tells you how much a nutrient in a serving of food contributes to a daily diet. 2,000 calories a day is used for general nutrition advice.	

- Notes**
- Our dishes are made in kitchens, in cooking processes, and on equipment shared with milk, eggs, fish, shellfish, peanuts, tree nuts, wheat, soy, and sesame. Fried items are prepared in shared frying oil. Our gluten-free items are not suitable for individuals with celiac disease or severe gluten sensitivity.
  - Suggested accompaniments are not included in the Ingredient, Allergen and Nutritional Facts List.

# Di Fara Cheese 16" (VG)

## PRODUCT INFORMATION

<b>Distributed by</b> Wonder Group, Inc New York, NY 10006	<b>SKU</b> 8806437
<b>GTIN</b> 00850052739089	<b>UPC</b> 850052739089
<b>Cook Method</b> Cook from frozen. Cook at 550°F in TurboChef double batch oven	<b>Storage Method</b> Frozen at 0°F
<b>Cook Time</b> 4:00 for full bake 3:00 for par-bake (for displays) 0:30 for reheating per slice	<b>Shelf Life - Frozen</b> 180 days
<b>Required Smallware</b> Pizza platter, pizza cutter, kitchen scissors	<b>Shelf Life - Defrosted</b> N/A - cook from frozen
	<b>Defrost Time Before Cooking</b> N/A - cook from frozen

## SHIPPING INFORMATION

<b>Item Weight</b> 968g	<b>Case Cube</b> 1.95 cu ft
<b>Item Quantity in Case</b> 10 pieces per case	<b>Case Dimensions</b> 16.75" x 16.75" x 12"
<b>Case Net Weight</b> 21.34 lbs	<b>Case TI-HI</b> 4 x 5
<b>Case Gross Weight</b> 25.68 lbs	<b>Pallet Gross Weight</b> 553.50 lbs
<b>Cases Per Pallet</b> 20	

## INGREDIENT LIST

<b>Ingredients</b> Wheat Flour, Pizza Sauce (Tomato Puree [Water, Tomato Paste], Tomatoes, Salt, Spices), Water, Low Moisture Mozzarella Cheese (Pasteurized Milk, Cheese Culture, Salt, Enzymes, Vinegar), Cellulose Powder added to prevent caking, Grated Parmesan Cheese (Milk, Cultures, Salt, Enzymes), Canola Oil, Salt, Enriched Durum Flour (Durum Wheat Flour, Niacin, Ferrous Sulfate, Thiamin Mononitrate, Riboflavin, Folic Acid), Sunflower Lecithin, Yeast, Guar Gum.
<b>Allergens</b> Contains Milk, Wheat
<b>Suggested Accompaniments</b> None

Nutrition Facts	
80 servings per container	
<b>Serving size</b>	<b>1/8 Pizza (121g)</b>
Amount per serving	
<b>Calories</b>	<b>240</b>
% Daily Value*	
<b>Total Fat</b> 8g	<b>10%</b>
Saturated Fat 4g	20%
Trans Fat 0g	
<b>Cholesterol</b> 20mg	<b>7%</b>
<b>Sodium</b> 590mg	<b>26%</b>
<b>Total Carbohydrate</b> 30g	<b>11%</b>
Dietary Fiber 2g	7%
Total Sugars 1g	
Includes 0g Added Sugars	0%
<b>Protein</b> 11g	
Vitamin D 0.1mcg	0%
Calcium 160mg	10%
Iron 0.7mg	4%
Potassium 190mg	4%
*The % Daily Value tells you how much a nutrient in a serving of food contributes to a daily diet. 2,000 calories a day is used for general nutrition advice.	

- Notes
- Our dishes are made in kitchens, in cooking processes, and on equipment shared with milk, eggs, fish, shellfish, peanuts, tree nuts, wheat, soy, and sesame. Fried items are prepared in shared frying oil. Our gluten-free items are not suitable for individuals with celiac disease or severe gluten sensitivity.
  - Suggested accompaniments are not included in the Ingredient, Allergen and Nutritional Facts List.

# Di Fara Pepperoni 16"

## PRODUCT INFORMATION

<b>Distributed by</b> Wonder Group, Inc New York, NY 10006	<b>SKU</b> 8806439
<b>GTIN</b> 00850052739102	<b>UPC</b> 850052739102
<b>Cook Method</b> Cook from frozen. Cook at 550°F in TurboChef double batch oven	<b>Storage Method</b> Frozen at 0°F
<b>Cook Time</b> 4:00 for full bake 3:00 for par-bake (for displays) 0:30 for reheating per slice	<b>Shelf Life - Frozen</b> 180 days
<b>Required Smallware</b> Pizza platter, pizza cutter, kitchen scissors	<b>Shelf Life - Defrosted</b> N/A - cook from frozen
	<b>Defrost Time Before Cooking</b> N/A - cook from frozen

## SHIPPING INFORMATION

<b>Item Weight</b> 1,072g	<b>Case Cube</b> 1.95 cu ft
<b>Item Quantity in Case</b> 10 pieces per case	<b>Case Dimensions</b> 16.75" x 16.75" x 12"
<b>Case Net Weight</b> 23.63 lbs	<b>Case TI-HI</b> 4 x 5
<b>Case Gross Weight</b> 27.97 lbs	<b>Pallet Gross Weight</b> 599.36 lbs
<b>Cases Per Pallet</b> 20	

## INGREDIENT LIST

<b>Ingredients</b> Wheat Flour, Pizza Sauce (Tomato Puree [Water, Tomato Paste], Tomatoes, Salt, Spices), Water, Low Moisture Mozzarella Cheese (Pasteurized Milk, Cheese Culture, Salt, Enzymes, Vinegar), Cellulose Powder added to prevent caking, Pepperoni (Pork, Beef, Salt, Contains 2% or less of Water, Dextrose, Spices, Lactic Acid Starter Culture, Sodium Ascorbate, Oleoresin of Paprika, Garlic Powder, Sodium Nitrite, BHA, BHT, Citric Acid), Grated Parmesan Cheese (Milk, Cultures, Salt, Enzymes), Canola Oil, Salt, Enriched Durum Flour (Durum Wheat Flour, Niacin, Ferrous Sulfate, Thiamin Mononitrate, Riboflavin, Folic Acid), Sunflower Lecithin, Yeast, Guar Gum.
<b>Allergens</b> Contains Milk, Wheat
<b>Suggested Accompaniments</b> None

Nutrition Facts	
8 servings per container	
<b>Serving size</b>	<b>1/8 Pizza (134g)</b>
Amount per serving	
<b>Calories</b>	<b>310</b>
% Daily Value*	
<b>Total Fat</b> 14g	<b>18%</b>
Saturated Fat 6g	<b>30%</b>
Trans Fat 0g	
<b>Cholesterol</b> 35mg	<b>12%</b>
<b>Sodium</b> 810mg	<b>35%</b>
<b>Total Carbohydrate</b> 30g	<b>11%</b>
Dietary Fiber 2g	<b>7%</b>
Total Sugars 1g	
Includes 0g Added Sugars	<b>0%</b>
<b>Protein</b> 13g	
Vitamin D 0.1mcg	<b>0%</b>
Calcium 160mg	<b>10%</b>
Iron 0.8mg	<b>4%</b>
Potassium 230mg	<b>4%</b>
*The % Daily Value tells you how much a nutrient in a serving of food contributes to a daily diet. 2,000 calories a day is used for general nutrition advice.	

- Notes
- Our dishes are made in kitchens, in cooking processes, and on equipment shared with milk, eggs, fish, shellfish, peanuts, tree nuts, wheat, soy, and sesame. Fried items are prepared in shared frying oil. Our gluten-free items are not suitable for individuals with celiac disease or severe gluten sensitivity.
  - Suggested accompaniments are not included in the Ingredient, Allergen and Nutritional Facts List.



# Pizza Crust 12" (V)(VG)(DF)

## PRODUCT INFORMATION

<b>Distributed by</b> Wonder Group, Inc New York, NY 10006	<b>SKU</b> 8806584
<b>GTIN</b> 00850052739713	<b>UPC</b> 850052739713
<b>Cook Method</b> Cook defrosted from refrigerated temperature (38°F) at 550°F in TurboChef Double Batch oven. Toppings should be defrosted before adding to crust	<b>Storage Method</b> Frozen at 0°F
<b>Cook Time</b> 3:00 minutes from defrosted	<b>Shelf Life - Frozen</b> 365 days
<b>Required Smallware</b> Pizza platter, pizza cutter, kitchen scissors	<b>Shelf Life - Defrosted</b> 10 days
	<b>Defrost Time Before Cooking</b> N/A - cook from frozen



## SHIPPING INFORMATION

<b>Item Weight</b> 250g	<b>Case Cube</b> 1.03 cu ft
<b>Item Quantity in Case</b> 15 pieces per case	<b>Case Dimensions</b> 12.6" x 12.6" x 11.2"
<b>Case Net Weight</b> 8.27 lbs	<b>Case TI-HI</b> 9 x 7
<b>Case Gross Weight</b> 9.27 lbs	<b>Pallet Gross Weight</b> 623.84 lbs
<b>Cases Per Pallet</b> 63	

## INGREDIENT LIST

<b>Ingredients</b> Wheat Flour, Water, 2% or less of Salt, Canola Oil, Yeast, Sunflower Lecithin, Guar Gum
<b>Allergens</b> Contains Wheat
<b>Suggested Accompaniments</b> None

## Nutrition Facts

15 servings per container  
Serving size 1 crust (250g)

Amount per serving  
**Calories 570**

% Daily Value\*

Total Fat 7g 9%

Saturated Fat 1.5g 8%

Trans Fat 0g

Cholesterol 0mg 0%

Sodium 1470mg 64%

Total Carbohydrate 109g 40%

Dietary Fiber 3g 11%

Total Sugars 2g

Includes 0g Added Sugars 0%

Protein 19g

Vitamin D 0mcg 0%

Calcium 30mg 2%

Iron 1.1mg 6%

Potassium 200mg 4%

\*The % Daily Value tells you how much a nutrient in a serving of food contributes to a daily diet. 2,000 calories a day is used for general nutrition advice.

### Notes

- Our dishes are made in kitchens, in cooking processes, and on equipment shared with milk, eggs, fish, shellfish, peanuts, tree nuts, wheat, soy, and sesame. Fried items are prepared in shared frying oil. Our gluten-free items are not suitable for individuals with celiac disease or severe gluten sensitivity.
- Suggested accompaniments are not included in the Ingredient, Allergen and Nutritional Facts List.

# Crispy Chicken Wings (DF)(GF)

## PRODUCT INFORMATION

<b>Distributed by</b> Wonder Group, Inc New York, NY 10006	<b>SKU</b> 8806678
<b>GTIN</b> 00850052739126	<b>UPC</b> 850052739126
<b>Cook Method</b> Cook when defrosted. Cook at 475°F in TurboChef double batch oven	<b>Storage Method</b> Frozen at 0°F
<b>Cook Time</b> 5:00 minutes	<b>Shelf Life - Frozen</b> 180 days
<b>Required Smallware</b> Solid mat, tongs	<b>Shelf Life - Defrosted</b> 3 days
	<b>Defrost Time Before Cooking</b> 24 hours



## SHIPPING INFORMATION

<b>Item Weight</b> 260g (6 pieces per unit)	<b>Case Cube</b> 0.97 cu ft
<b>Item Quantity in Case</b> 10 units/tins per case	<b>Case Dimensions</b> 12.88" x 9.50" x 13.75"
<b>Case Net Weight</b> 5.73 lbs	<b>Case TI-HI</b> 15 x 4
<b>Case Gross Weight</b> 7.94 lbs	<b>Pallet Gross Weight</b> 516.52 lbs
<b>Cases Per Pallet</b> 60	

## INGREDIENT LIST

<b>Ingredients</b> Bone-In Chicken Wings (Chicken Wing Portions, Water, Modified Food Starch, Salt, Sodium Phosphates, Caramelized Sugar Syrup, Carrageenan), Canola Oil.
<b>Allergens</b> None
<b>Suggested Accompaniments</b> Carrots, celery, sauces of your choice

## Nutrition Facts

10 servings per container	
<b>Serving size</b>	<b>1 kit (260g)</b>
<b>Amount per serving</b>	
<b>Calories</b>	<b>450</b>
% Daily Value*	
<b>Total Fat 37g</b>	<b>47%</b>
Saturated Fat 7g	<b>35%</b>
Trans Fat 0g	
<b>Cholesterol 160mg</b>	<b>53%</b>
<b>Sodium 870mg</b>	<b>38%</b>
<b>Total Carbohydrate 0g</b>	<b>0%</b>
Dietary Fiber 0g	<b>0%</b>
Total Sugars 0g	
Includes 0g Added Sugars	<b>0%</b>
<b>Protein 31g</b>	
<b>Vitamin D 0mcg</b>	<b>0%</b>
<b>Calcium 0mg</b>	<b>0%</b>
<b>Iron 1.7mg</b>	<b>10%</b>
<b>Potassium 310mg</b>	<b>6%</b>
*The % Daily Value tells you how much a nutrient in a serving of food contributes to a daily diet. 2,000 calories a day is used for general nutrition advice.	

- Notes**
- Our dishes are made in kitchens, in cooking processes, and on equipment shared with milk, eggs, fish, shellfish, peanuts, tree nuts, wheat, soy, and sesame. Fried items are prepared in shared frying oil. Our gluten-free items are not suitable for individuals with celiac disease or severe gluten sensitivity.
  - Suggested accompaniments are not included in the Ingredient, Allergen and Nutritional Facts List.

# Chicken Tenders

## PRODUCT INFORMATION

<b>Distributed by</b>	<b>SKU</b>
Wonder Group, Inc	8803972
New York, NY 10006	
<b>GTIN</b>	<b>UPC</b>
00850052739171	850052739171
<b>Cook Method</b>	<b>Storage Method</b>
Cook when defrosted. Cook at 475°F in TurboChef double batch oven	Frozen at 0°F
<b>Cook Time</b>	<b>Shelf Life - Frozen</b>
4:00 minutes	365 days
	<b>Shelf Life - Defrosted</b>
	3 days
<b>Required Smallware</b>	<b>Defrost Time Before Cooking</b>
Perforated mat, tongs	24 hours



## SHIPPING INFORMATION

<b>Item Weight</b>	<b>Case Cube</b>
168g (4 pieces per unit)	0.97 cu ft
<b>Item Quantity in Case</b>	<b>Case Dimensions</b>
10 units/tins per case	12.88" x 9.50" x 13.75"
<b>Case Net Weight</b>	<b>Case TI-HI</b>
3.70 lbs	15 x 4
<b>Case Gross Weight</b>	<b>Pallet Gross Weight</b>
5.91 lbs	394.83 lbs
<b>Cases Per Pallet</b>	
60	

## INGREDIENT LIST

### Ingredients

Breaded Chicken Tender with Rib Meat (Portioned Chicken Tenders With Rib Meat, Water, Seasoning [Maltodextrin, Salt, Sugar, Flavors, Vegetable Stock (Carrot, Onion, Celery), Carrot Powder and Garlic Powder], Sodium Phosphates, Salt, Modified Food Starch. Breaded With: Wheat Flour, Water, Salt, Wheat Gluten, Leavening [Sodium Bicarbonate, Sodium Aluminum Phosphate, Monocalcium Phosphate, Sodium Acid Pyrophosphate], Spices, Garlic Powder, Dextrose, Yellow Corn Flour, Onion Powder, Extractives Of Paprika And Turmeric, Disodium Inosinate And Disodium Guanylate, Spice Extractive. Breading Set In Vegetable Oil.), Canola Oil.

### Allergens

Contains Wheat

### Suggested Accompaniments

Honey mustard

## Nutrition Facts

10 servings per container  
Serving size 1 Kit (168g)

Amount per serving

**Calories 520**

% Daily Value\*

**Total Fat 34g 44%**

Saturated Fat 4.5g 23%

Trans Fat 0g

**Cholesterol 70mg 23%**

**Sodium 930mg 40%**

**Total Carbohydrate 22g 8%**

Dietary Fiber 1g 4%

Total Sugars 0g

Includes 0g Added Sugars 0%

**Protein 29g**

Vitamin D 0mcg 0%

Calcium 27mg 2%

Iron 1mg 6%

**Potassium 259mg 6%**

\*The % Daily Value tells you how much a nutrient in a serving of food contributes to a daily diet. 2,000 calories a day is used for general nutrition advice.

### Notes

- Our dishes are made in kitchens, in cooking processes, and on equipment shared with milk, eggs, fish, shellfish, peanuts, tree nuts, wheat, soy, and sesame. Fried items are prepared in shared frying oil. Our gluten-free items are not suitable for individuals with celiac disease or severe gluten sensitivity.
- Suggested accompaniments are not included in the Ingredient, Allergen and Nutritional Facts List.

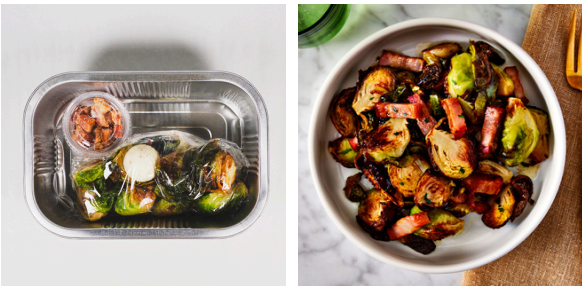


# Crispy Brussels Sprouts (GF)

To Be Discontinued

## PRODUCT INFORMATION

<b>Distributed by</b> Wonder Group, Inc New York, NY 10006	<b>SKU</b> 8803965
<b>GTIN</b> 00850052739133	<b>UPC</b> 850052739133
<b>Cook Method</b> Cook when defrosted. Cook at 475°F in TurboChef double batch oven	<b>Storage Method</b> Frozen at 0°F
<b>Cook Time</b> 3:00 minutes	<b>Shelf Life - Frozen</b> 365 days
<b>Required Smallware</b> Mixing spoon	<b>Shelf Life - Defrosted</b> 3 days
	<b>Defrost Time Before Cooking</b> 24 hours



## SHIPPING INFORMATION

<b>Item Weight</b> 247g	<b>Case Cube</b> 0.97 cu ft
<b>Item Quantity in Case</b> 10 units/tins per case	<b>Case Dimensions</b> 12.88" x 9.50" x 13.75"
<b>Case Net Weight</b> 5.45 lbs	<b>Case TI-HI</b> 15 x 4
<b>Case Gross Weight</b> 7.66 lbs	<b>Pallet Gross Weight</b> 499.33 lbs
<b>Cases Per Pallet</b> 60	

## INGREDIENT LIST

### Ingredients

Brussels Sprouts, Canola Oil, Bacon (Pork, Water, Salt, Sugar, Sodium Phosphate, Sodium Erythorbate, Sodium Nitrite), Butter (Pasteurized Cream, Natural Flavorings), Lemon Juice, Salt, Garlic, Parsley, Olive Oil, Chive.

### Allergens

Contains Milk

### Suggested Accompaniments

Balsamic reduction

## Nutrition Facts

10 servings per container  
Serving size 1 Kit (247g)

Amount per serving  
**Calories 390**  
% Daily Value\*

<b>Total Fat</b> 33g	<b>42%</b>
Saturated Fat 9g	<b>45%</b>
Trans Fat 0g	
<b>Cholesterol</b> 35mg	<b>12%</b>
<b>Sodium</b> 630mg	<b>27%</b>
<b>Total Carbohydrate</b> 17g	<b>6%</b>
Dietary Fiber 7g	<b>25%</b>
Total Sugars 4g	
Includes 0g Added Sugars	<b>0%</b>
<b>Protein</b> 10g	
<b>Vitamin D</b> 0mcg	<b>0%</b>
<b>Calcium</b> 82mg	<b>6%</b>
<b>Iron</b> 4mg	<b>20%</b>
<b>Potassium</b> 772mg	<b>15%</b>

\*The % Daily Value tells you how much a nutrient in a serving of food contributes to a daily diet. 2,000 calories a day is used for general nutrition advice.

### Notes

- Our dishes are made in kitchens, in cooking processes, and on equipment shared with milk, eggs, fish, shellfish, peanuts, tree nuts, wheat, soy, and sesame. Fried items are prepared in shared frying oil. Our gluten-free items are not suitable for individuals with celiac disease or severe gluten sensitivity.
- Suggested accompaniments are not included in the Ingredient, Allergen and Nutritional Facts List.

# Cheese Quesadilla (VG)

## PRODUCT INFORMATION

<b>Distributed by</b> Wonder Group, Inc New York, NY 10006	<b>SKU</b> 8803988
<b>GTIN</b> 00850052739164	<b>UPC</b> 850052739164
<b>Cook Method</b> Cook when defrosted. Cook at 475°F in TurboChef double batch oven	<b>Storage Method</b> Frozen at 0°F
<b>Cook Time</b> 2:30 minutes	<b>Shelf Life - Frozen</b> 365 days
<b>Required Smallware</b> Solid mat, spatula	<b>Shelf Life - Defrosted</b> 3 days
	<b>Defrost Time Before Cooking</b> 24 hours



## SHIPPING INFORMATION

<b>Item Weight</b> 300g (4 pieces per unit)	<b>Case Cube</b> 0.97 cu ft
<b>Item Quantity in Case</b> 10 units/tins per case	<b>Case Dimensions</b> 12.88" x 9.50" x 13.75"
<b>Case Net Weight</b> 6.61 lbs	<b>Case TI-HI</b> 15 x 4
<b>Case Gross Weight</b> 8.82 lbs	<b>Pallet Gross Weight</b> 569.43 lbs
<b>Cases Per Pallet</b> 60	

## INGREDIENT LIST

**Ingredients**  
Shredded Quesadilla Cheese (Pasteurized Whole Cow's Milk, Salt, Enzymes, Culture, Potato Starch and Powdered Cellulose [added to prevent caking]), Flour Tortilla (Bleached Enriched Flour [Wheat Flour, Niacin, Iron, Thiamin Mononitrate, Riboflavin, Folic Acid, Enzyme], Water, Vegetable Shortening [Palm Oil, Mono Diglycerides (Emulsifier), TBHQ And Citric Acid (To Preserve Freshness)], Salt, Leavening [Sodium Bicarbonate, Sodium Acid Pyrophosphate, Monocalcium Phosphate], Calcium Propionate [Preservative], Sugar, Fumaric Acid, Guar Gum, Mono & Diglyceride, Rice Flour, Sodium Metabisulfite [Dough Conditioner]), Cotija Cheese (Pasteurized Whole Milk, Salt, Enzymes, Culture), Poblano Peppers, Cilantro.

**Allergens**  
Contains Milk, Wheat

**Suggested Accompaniments**  
Sour cream, salsa

## Nutrition Facts

10 servings per container	
<b>Serving size</b>	<b>1 Kit (300g)</b>
<b>Amount per serving</b>	
<b>Calories</b>	<b>910</b>
	<b>% Daily Value*</b>
<b>Total Fat 55g</b>	<b>71%</b>
Saturated Fat 39g	195%
Trans Fat 0g	
<b>Cholesterol 125mg</b>	<b>42%</b>
<b>Sodium 1980mg</b>	<b>86%</b>
<b>Total Carbohydrate 53g</b>	<b>19%</b>
Dietary Fiber 1g	4%
Total Sugars 0g	
Includes 0g Added Sugars	0%
<b>Protein 42g</b>	
Vitamin D 0mcg	0%
<b>Calcium 1419mg</b>	<b>110%</b>
<b>Iron 3mg</b>	<b>15%</b>
<b>Potassium 126mg</b>	<b>2%</b>
*The % Daily Value tells you how much a nutrient in a serving of food contributes to a daily diet. 2,000 calories a day is used for general nutrition advice.	

- Notes**
- Our dishes are made in kitchens, in cooking processes, and on equipment shared with milk, eggs, fish, shellfish, peanuts, tree nuts, wheat, soy, and sesame. Fried items are prepared in shared frying oil. Our gluten-free items are not suitable for individuals with celiac disease or severe gluten sensitivity.
  - Suggested accompaniments are not included in the Ingredient, Allergen and Nutritional Facts List.

# Mac & Cheese (VG)

## PRODUCT INFORMATION

<b>Distributed by</b> Wonder Group, Inc New York, NY 10006	<b>SKU</b> 8806854
<b>CTIN</b> 00850052739157	<b>UPC</b> 850052739157
<b>Cook Method</b> Cook at 475°F in TurboChef double batch oven when defrosted.	<b>Storage Method</b> Frozen at 0°F
<b>Cook Time</b> 4:00 minutes in TurboChef oven	<b>Shelf Life - Frozen</b> 150 days
<b>Required Smallware</b> 2.25 lb foil take out container, mixing spoon, kitchen scissors	<b>Shelf Life - Defrosted</b> 2 days
	<b>Defrost Time Before Cooking</b> 24 hours

## SHIPPING INFORMATION

<b>Item Weight</b> 200g	<b>Case Cube</b> 0.97 cu ft
<b>Item Quantity in Case</b> 36 units per case	<b>Case Dimensions</b> 12.88" x 9.50" x 13.75"
<b>Case Net Weight</b> 15.87 lbs	<b>Case TI-HI</b> 15 x 4
<b>Case Gross Weight</b> 17.62 lbs	<b>Pallet Gross Weight</b> 1,097.18 lbs
<b>Cases Per Pallet</b> 60	

## INGREDIENT LIST

**Ingredients**  
Macaroni & Cheese (Blanched Enriched Macaroni Product [Water, Semolina, Egg Whites, Niacin, Ferrous Sulfate, Thiamin Mononitrate, Riboflavin, Folic Acid], Water, Cheddar Cheese [Cultured Milk, Salt, Enzymes], Skim Milk, Cheddar Cheese [Cultured Milk, Salt, Enzymes], Soybean Oil, 2% or less of Whey, Whey Protein Concentrate, Modified Cornstarch, Milkfat, Salt, Sodium Citrate, Lactic Acid, Butter [Cream, Salt], Cream, Enriched Wheat Flour [Wheat Flour, Niacin, Reduced Iron, Thiamine Mononitrate, Riboflavin, Folic Acid], Milk Protein Concentrate, Potassium Salt, Guar Gum, Calcium Lactate, Xanthan Gum, DATEM, Mono- And Diglycerides, Sodium Alginate, Enzyme).

**Allergens**  
Contains Egg, Milk, Wheat

**Suggested Accompaniments**  
Breadcrumbs, parsley



## Nutrition Facts

36 servings per container	
<b>Serving size</b>	<b>1 Pouch (218g)</b>
<b>Amount per serving</b>	
<b>Calories</b>	<b>420</b>
<b>% Daily Value*</b>	
<b>Total Fat 25g</b>	<b>32%</b>
Saturated Fat 11g	<b>55%</b>
Trans Fat 0.5g	
<b>Cholesterol 75mg</b>	<b>25%</b>
<b>Sodium 870mg</b>	<b>38%</b>
<b>Total Carbohydrate 32g</b>	<b>12%</b>
Dietary Fiber 1g	<b>4%</b>
Total Sugars 6g	
Includes 0g Added Sugars	<b>0%</b>
<b>Protein 17g</b>	
<b>Vitamin D 0mcg</b>	<b>0%</b>
<b>Calcium 400mg</b>	<b>30%</b>
<b>Iron 1.2mg</b>	<b>6%</b>
<b>Potassium 350mg</b>	<b>8%</b>
*The % Daily Value tells you how much a nutrient in a serving of food contributes to a daily diet. 2,000 calories a day is used for general nutrition advice.	

- Notes**
- Our dishes are made in kitchens, in cooking processes, and on equipment shared with milk, eggs, fish, shellfish, peanuts, tree nuts, wheat, soy, and sesame. Fried items are prepared in shared frying oil. Our gluten-free items are not suitable for individuals with celiac disease or severe gluten sensitivity.
  - Suggested accompaniments are not included in the Ingredient, Allergen and Nutritional Facts List.



# French Fries (V)(VG)(DF)(GF)

## PRODUCT INFORMATION

<b>Distributed by</b> Wonder Group, Inc New York, NY 10006	<b>SKU</b> 8803968
<b>GTIN</b> 00850052739188	<b>UPC</b> 850052739188
<b>Cook Method</b> Cook when defrosted. Cook at 475°F in TurboChef double batch oven	<b>Storage Method</b> Frozen at 0°F
<b>Cook Time</b> 4:00 minutes	<b>Shelf Life - Frozen</b> 365 days
<b>Required Smallware</b> Perforated mat, tongs	<b>Shelf Life - Defrosted</b> 3 days
	<b>Defrost Time Before Cooking</b> 24 hours



## SHIPPING INFORMATION

<b>Item Weight</b> 225g	<b>Case Cube</b> 0.97 cu ft
<b>Item Quantity in Case</b> 10 units/tins per case	<b>Case Dimensions</b> 12.88" x 9.50" x 13.75"
<b>Case Net Weight</b> 4.96 lbs	<b>Case TI-HI</b> 15 x 4
<b>Case Gross Weight</b> 7.17 lbs	<b>Pallet Gross Weight</b> 470.22 lbs
<b>Cases Per Pallet</b> 60	

## INGREDIENT LIST

### Ingredients

French Fries (Potatoes, Food Starch-Modified, Vegetable Oil [Soybean, Canola, And/Or Cottonseed Oils], Contains Less Than 2% Of Cornstarch, Dextrin, Dextrose, Leavening [Sodium Acid Pyrophosphate, Sodium Bicarbonate], Rice Flour, Salt, Sugar, Xanthan Gum, Disodium Dihydrogen Pyrophosphate [To Maintain Color]), Canola Oil.

### Allergens

None

### Suggested Accompaniments

Ketchup, Kosher salt

## Nutrition Facts

10 servings per container  
**Serving size** 1 Kit (225g)

**Amount per serving**  
**Calories** **500**

	% Daily Value*
<b>Total Fat</b> 30g	<b>38%</b>
Saturated Fat 2.5g	<b>13%</b>
Trans Fat 0g	
<b>Cholesterol</b> 0mg	<b>0%</b>
<b>Sodium</b> 730mg	<b>32%</b>
<b>Total Carbohydrate</b> 51g	<b>19%</b>
Dietary Fiber 2g	<b>7%</b>
Total Sugars 0g	
Includes 0g Added Sugars	<b>0%</b>

<b>Protein</b> 2g	
Vitamin D 0mcg	<b>0%</b>
Calcium 0mg	<b>0%</b>
Iron 1mg	<b>6%</b>
Potassium 511mg	<b>10%</b>

\*The % Daily Value tells you how much a nutrient in a serving of food contributes to a daily diet. 2,000 calories a day is used for general nutrition advice.

### Notes

- Our dishes are made in kitchens, in cooking processes, and on equipment shared with milk, eggs, fish, shellfish, peanuts, tree nuts, wheat, soy, and sesame. Fried items are prepared in shared frying oil. Our gluten-free items are not suitable for individuals with celiac disease or severe gluten sensitivity.
- Suggested accompaniments are not included in the Ingredient, Allergen and Nutritional Facts List.

# Garlic Breadsticks (VG)

## PRODUCT INFORMATION

<b>Distributed by</b> Wonder Group, Inc New York, NY 10006	<b>SKU</b> 8806295
<b>GTIN</b> 00850052739508	<b>UPC</b> 850052739508
<b>Cook Method</b> Cook at 475°F in TurboChef double batch oven when defrosted.	<b>Storage Method</b> Frozen at 0°F
<b>Cook Time</b> 1:30 minutes	<b>Shelf Life - Frozen</b> 300 days
<b>Required Smallware</b> Tongs	<b>Shelf Life - Defrosted</b> 3 days
	<b>Defrost Time Before Cooking</b> 24 hours



## SHIPPING INFORMATION

<b>Item Weight</b> 86g	<b>Case Cube</b> 0.97 cu ft
<b>Item Quantity in Case</b> 10 units/tins per case	<b>Case Dimensions</b> 12.88" x 9.50" x 13.75"
<b>Case Net Weight</b> 1.90 lbs	<b>Case TI-HI</b> 15 x 4
<b>Case Gross Weight</b> 4.11 lbs	<b>Pallet Gross Weight</b> 286.36 lbs
<b>Cases Per Pallet</b> 60	

## INGREDIENT LIST

**Ingredients**  
Garlic Breadstick (Bread [Enriched Wheat Flour (Wheat Flour, Malted Barley Flour, Reduced Iron, Niacin, Thiamine Mononitrate, Riboflavin, Folic Acid), Water, Soybean Oil, 2% Or Less of Salt, Sugar, Dextrose, Yeast, Calcium Propionate (Preservative), Monoglycerides, Dough Conditioners (Ascorbic Acid, L-Cysteine), Cornmeal], Garlic Spread [Soybean Oil, Water, Dehydrated Garlic, Salt, Hydrogenated Cottonseed and/or Palm Oil, Monoglycerides, Natural Flavor, Citric Acid, Yeast Extract, Whey, Beta Carotene (color)]), Butter (Pasteurized Cream, Natural Flavorings), Garlic, Parsley, Canola Oil, Salt, Chive.

**Allergens**  
Contains Milk, Wheat

**Suggested Accompaniments**  
Grated parmesan, marinara sauce

## Nutrition Facts

10 servings per container  
**Serving size** 2 breadsticks  
with butter (86 g)

Amount per serving  
**Calories** 340

	% Daily Value*
<b>Total Fat</b> 21g	27%
Saturated Fat 10g	50%
Trans Fat 0g	
<b>Cholesterol</b> 35mg	12%
<b>Sodium</b> 470mg	20%
<b>Total Carbohydrate</b> 30g	11%
Dietary Fiber 1g	4%
Total Sugars 1g	
Includes 1g Added Sugars	2%
<b>Protein</b> 5g	
Vitamin D 0mcg	0%
Calcium 30mg	2%
Iron 1.8mg	10%
Potassium 0mg	0%

\*The % Daily Value tells you how much a nutrient in a serving of food contributes to a daily diet. 2,000 calories a day is used for general nutrition advice.

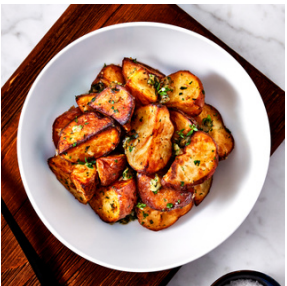
- Notes**
- Our dishes are made in kitchens, in cooking processes, and on equipment shared with milk, eggs, fish, shellfish, peanuts, tree nuts, wheat, soy, and sesame. Fried items are prepared in shared frying oil. Our gluten-free items are not suitable for individuals with celiac disease or severe gluten sensitivity.
  - Suggested accompaniments are not included in the Ingredient, Allergen and Nutritional Facts List.

# Roasted Red Bliss Potatoes (VG)(GF)

To Be Discontinued

## PRODUCT INFORMATION

<b>Distributed by</b> Wonder Group, Inc New York, NY 10006	<b>SKU</b> 8803982
<b>GTIN</b> 00850052739201	<b>UPC</b> 850052739201
<b>Cook Method</b> Cook when defrosted. Cook at 475°F in TurboChef double batch oven	<b>Storage Method</b> Frozen at 0°F
<b>Cook Time</b> 3:00 minutes	<b>Shelf Life - Frozen</b> 180 days
<b>Required Smallware</b> Mixing spoon	<b>Shelf Life - Defrosted</b> 3 days
	<b>Defrost Time Before Cooking</b> 24 hours



## SHIPPING INFORMATION

<b>Item Weight</b> 228g	<b>Case Cube</b> 0.97 cu ft
<b>Item Quantity in Case</b> 10 units/tins per case	<b>Case Dimensions</b> 12.88" x 9.50" x 13.75"
<b>Case Net Weight</b> 5.03 lbs	<b>Case TI-HI</b> 15 x 4
<b>Case Gross Weight</b> 7.24 lbs	<b>Pallet Gross Weight</b> 474.19 lbs
<b>Cases Per Pallet</b> 60	

## INGREDIENT LIST

<b>Ingredients</b> Red Potato, Herb Butter (Butter [Cream, Salt], Canola Oil, Parsley, Chives, Roasted Garlic), Olive Oil, Sea Salt, Spice
<b>Allergens</b> Contains Milk
<b>Suggested Accompaniments</b> Chopped parsley, chopped thyme leaves

## Nutrition Facts

10 servings per container  
Serving size 1 Kit (228 g)

Amount per serving  
**Calories 380**

	% Daily Value*
<b>Total Fat 26g</b>	<b>33%</b>
Saturated Fat 11g	55%
Trans Fat 0g	
<b>Cholesterol 45mg</b>	<b>15%</b>
<b>Sodium 330mg</b>	<b>14%</b>
<b>Total Carbohydrate 31g</b>	<b>11%</b>
Dietary Fiber 3g	11%
Total Sugars 3g	
Includes 0g Added Sugars	0%

<b>Protein 4g</b>	
Vitamin D 0mcg	0%
Calcium 30mg	2%
Iron 1.6mg	8%
<b>Potassium 1210mg</b>	<b>25%</b>

\*The % Daily Value tells you how much a nutrient in a serving of food contributes to a daily diet. 2,000 calories a day is used for general nutrition advice.

- Notes
- Our dishes are made in kitchens, in cooking processes, and on equipment shared with milk, eggs, fish, shellfish, peanuts, tree nuts, wheat, soy, and sesame. Fried items are prepared in shared frying oil. Our gluten-free items are not suitable for individuals with celiac disease or severe gluten sensitivity.
  - Suggested accompaniments are not included in the Ingredient, Allergen and Nutritional Facts List.

# Rigatoni Pomodoro (VG)

## PRODUCT INFORMATION

<b>Distributed by</b> Wonder Group, Inc New York, NY 10006	<b>SKU</b> 8803976
<b>GTIN</b> 00850052739294	<b>UPC</b> 850052739294
<b>Cook Method</b> Cook when defrosted. Cook at 475°F in TurboChef double batch oven	<b>Storage Method</b> Frozen at 0°F
<b>Cook Time</b> 4:30 minutes	<b>Shelf Life - Frozen</b> 365 days
<b>Required Smallware</b> Aluminum foil, mixing spoon, kitchen scissors	<b>Shelf Life - Defrosted</b> 3 days
	<b>Defrost Time Before Cooking</b> 24 hours



## SHIPPING INFORMATION

<b>Item Weight</b> 384g	<b>Case Cube</b> 0.97 cu ft
<b>Item Quantity in Case</b> 10 units/tins per case	<b>Case Dimensions</b> 12.88" x 9.50" x 13.75"
<b>Case Net Weight</b> 8.47 lbs	<b>Case TI-HI</b> 15 x 4
<b>Case Gross Weight</b> 10.68 lbs	<b>Pallet Gross Weight</b> 680.55 lbs
<b>Cases Per Pallet</b> 60	

## INGREDIENT LIST

<b>Ingredients</b> Whole Peeled Tomatoes (Whole Peeled Tomatoes, Tomato Juice, Salt, Citric Acid, Basil), Pre-Cooked Pasta [Semolina, Durum Wheat Flour, Vitamin B3, Iron, Vitamin B1, Vitamin B2, Folic Acid], Water), Butter (Pasteurized Cream, Natural Flavors), Olive Oil, Sugar, Basil, Salt, Garlic, Spice.
<b>Allergens</b> Contains Milk, Wheat
<b>Suggested Accompaniments</b> Fresh basil, parmesan

## Nutrition Facts

10 servings per container	
<b>Serving size</b>	<b>1 Kit (384g)</b>
<b>Amount per serving</b>	
<b>Calories</b>	<b>480</b>
<b>% Daily Value*</b>	
<b>Total Fat</b> 22g	<b>28%</b>
Saturated Fat 9g	<b>45%</b>
Trans Fat 0g	
<b>Cholesterol</b> 30mg	<b>10%</b>
<b>Sodium</b> 570mg	<b>25%</b>
<b>Total Carbohydrate</b> 65g	<b>24%</b>
Dietary Fiber 7g	<b>25%</b>
Total Sugars 9g	
Includes 1g Added Sugars	<b>2%</b>
<b>Protein</b> 12g	
Vitamin D 0mcg	<b>0%</b>
Calcium 54mg	<b>4%</b>
Iron 3mg	<b>15%</b>
Potassium 262mg	<b>6%</b>
<small>*The % Daily Value tells you how much a nutrient in a serving of food contributes to a daily diet. 2,000 calories a day is used for general nutrition advice.</small>	

- Notes
- Our dishes are made in kitchens, in cooking processes, and on equipment shared with milk, eggs, fish, shellfish, peanuts, tree nuts, wheat, soy, and sesame. Fried items are prepared in shared frying oil. Our gluten-free items are not suitable for individuals with celiac disease or severe gluten sensitivity.
  - Suggested accompaniments are not included in the Ingredient, Allergen and Nutritional Facts List.



# Penne alla Vodka (VG)

## PRODUCT INFORMATION

<b>Distributed by</b>	<b>SKU</b>
Wonder Group, Inc	8803986
New York, NY 10006	
<b>GTIN</b>	<b>UPC</b>
00850052739317	850052739317
<b>Cook Method</b>	<b>Storage Method</b>
Cook when defrosted. Cook at 475°F in TurboChef double batch oven	Frozen at 0°F
<b>Cook Time</b>	<b>Shelf Life - Frozen</b>
4:30 minutes	365 days
<b>Required Smallware</b>	<b>Shelf Life - Defrosted</b>
Aluminum foil, mixing spoon, kitchen scissors	3 days
	<b>Defrost Time Before Cooking</b>
	24 hours



## SHIPPING INFORMATION

<b>Item Weight</b>	<b>Case Cube</b>
434g	0.97 cu ft
<b>Item Quantity in Case</b>	<b>Case Dimensions</b>
10 units/tins per case	12.88" x 9.50" x 13.75"
<b>Case Net Weight</b>	<b>Case TI-HI</b>
9.57 lbs	15 x 4
<b>Case Gross Weight</b>	<b>Pallet Gross Weight</b>
11.78 lbs	746.68 lbs
<b>Cases Per Pallet</b>	
60	

## INGREDIENT LIST

### Ingredients

Whole Peeled Tomatoes (Whole Peeled Tomatoes, Tomato Juice, Salt, Citric Acid, Basil), Pre-Cooked Pasta [Semolina, Durum Wheat Flour, Vitamin B3, Iron, Vitamin B1, Vitamin B2, Folic Acid], Water), Heavy Cream (Cream, Milk, Carrageenan, Mono and Diglycerides, Cellulose Gum, Polysorbate 80), Water, Yellow Onion, Olive Oil, Butter (Pasteurized Cream, Natural Flavors), Tomato Paste (Tomatoes, Citric Acid), Salt, Vodka, Sugar, Basil, Spice, Garlic.

### Allergens

Contains Milk, Wheat

### Suggested Accompaniments

Fresh basil, parmesan

## Nutrition Facts

10 servings per container  
Serving size 1 Kit (434g)

Amount per serving  
**Calories 730**

% Daily Value\*

**Total Fat 46g 59%**

Saturated Fat 21g 105%

Trans Fat 0g

**Cholesterol 30mg 10%**

**Sodium 1110mg 48%**

**Total Carbohydrate 67g 24%**

Dietary Fiber 7g 25%

Total Sugars 9g

Includes 1g Added Sugars 2%

**Protein 12g**

Vitamin D 0mcg 0%

Calcium 59mg 4%

Iron 3mg 15%

Potassium 263mg 6%

\*The % Daily Value tells you how much a nutrient in a serving of food contributes to a daily diet. 2,000 calories a day is used for general nutrition advice.

### Notes

- Our dishes are made in kitchens, in cooking processes, and on equipment shared with milk, eggs, fish, shellfish, peanuts, tree nuts, wheat, soy, and sesame. Fried items are prepared in shared frying oil. Our gluten-free items are not suitable for individuals with celiac disease or severe gluten sensitivity.
- Suggested accompaniments are not included in the Ingredient, Allergen and Nutritional Facts List.

# Rigatoni Bolognese

## PRODUCT INFORMATION

<b>Distributed by</b> Wonder Group, Inc New York, NY 10006	<b>SKU</b> 8803974
<b>GTIN</b> 00850052739324	<b>UPC</b> 850052739324
<b>Cook Method</b> Cook when defrosted. Cook at 475°F in TurboChef double batch oven	<b>Storage Method</b> Frozen at 0°F
<b>Cook Time</b> 4:30 minutes	<b>Shelf Life - Frozen</b> 365 days
<b>Required Smallware</b> Aluminum foil, mixing spoon, kitchen scissors	<b>Shelf Life - Defrosted</b> 3 days
	<b>Defrost Time Before Cooking</b> 24 hours



## SHIPPING INFORMATION

<b>Item Weight</b> 434g	<b>Case Cube</b> 0.97 cu ft
<b>Item Quantity in Case</b> 10 units/tins per case	<b>Case Dimensions</b> 12.88" x 9.50" x 13.75"
<b>Case Net Weight</b> 9.57 lbs	<b>Case TI-HI</b> 15 x 4
<b>Case Gross Weight</b> 11.78 lbs	<b>Pallet Gross Weight</b> 746.68 lbs
<b>Cases Per Pallet</b> 60	

## INGREDIENT LIST

<b>Ingredients</b> Whole Peeled Tomatoes (Whole Peeled Tomatoes, Tomato Juice, Salt, Citric Acid, Basil), Pre-Cooked Pasta [Semolina, Durum Wheat Flour, Vitamin B3, Iron, Vitamin B1, Vitamin B2, Folic Acid], Water), Beef, Yellow Onion, Butter (Cream, Lactic Acid), Pork, Celery, Whole Milk, Water, Olive Oil, Carrot, Tomato Paste (Tomatoes, Citric Acid), White Wine, Pancetta (Pork Belly, Rolled and Flavored with Pepper and Garlic. Dried Cured with Salt, Dextrose, Spices, Sodium Erythorbate, Sodium Nitrite), Heavy Cream (Cream, Milk, Carrageenan, Mono and Diglycerides, Cellulose Gum, Polysorbate 80), Sea Salt, Garlic, Sugar, Basil, Canola Oil, Spice.
<b>Allergens</b> Contains Milk, Wheat
<b>Suggested Accompaniments</b> Fresh basil, parmesan

Nutrition Facts	
10 servings per container	
Serving size	1 Kit (434g)
Amount per serving	
Calories	590
% Daily Value*	
Total Fat 26g	33%
Saturated Fat 10g	50%
Trans Fat 0.5g	
Cholesterol 70mg	23%
Sodium 720mg	31%
Total Carbohydrate 67g	24%
Dietary Fiber 8g	29%
Total Sugars 10g	
Includes 1g Added Sugars	2%
Protein 23g	
Vitamin D 0mcg	0%
Calcium 82mg	6%
Iron 4mg	20%
Potassium 912mg	20%
*The % Daily Value tells you how much a nutrient in a serving of food contributes to a daily diet. 2,000 calories a day is used for general nutrition advice.	

- Notes
- Our dishes are made in kitchens, in cooking processes, and on equipment shared with milk, eggs, fish, shellfish, peanuts, tree nuts, wheat, soy, and sesame. Fried items are prepared in shared frying oil. Our gluten-free items are not suitable for individuals with celiac disease or severe gluten sensitivity.
  - Suggested accompaniments are not included in the Ingredient, Allergen and Nutritional Facts List.

# Cavatappi Alfredo

## PRODUCT INFORMATION

<b>Distributed by</b> Wonder Group, Inc New York, NY 10006	<b>SKU</b> 8803959
<b>GTIN</b> 00850052739300	<b>UPC</b> 850052739300
<b>Cook Method</b> Cook when defrosted. Cook at 475°F in TurboChef double batch oven	<b>Storage Method</b> Frozen at 0°F
<b>Cook Time</b> 4:30 minutes	<b>Shelf Life - Frozen</b> 365 days
<b>Required Smallware</b> Aluminum foil, mixing spoon, kitchen scissors	<b>Shelf Life - Defrosted</b> 3 days
	<b>Defrost Time Before Cooking</b> 24 hours



## SHIPPING INFORMATION

<b>Item Weight</b> 469g	<b>Case Cube</b> 0.97 cu ft
<b>Item Quantity in Case</b> 10 units/tins per case	<b>Case Dimensions</b> 12.88" x 9.50" x 13.75"
<b>Case Net Weight</b> 10.34 lbs	<b>Case TI-HI</b> 15 x 4
<b>Case Gross Weight</b> 12.55 lbs	<b>Pallet Gross Weight</b> 792.98 lbs
<b>Cases Per Pallet</b> 60	

## INGREDIENT LIST

### Ingredients

Heavy Cream (Cream, Milk, Carrageenan, Mono and Diglycerides, Cellulose Gum, Polysorbate 80), Pre-Cooked Pasta (Water, Semolina [Wheat], Durum Wheat Flour, Niacin, Ferrous Sulfate, Thiamine Mononitrate, Riboflavin, Folic Acid), Whole Milk, Grated Parmesan Cheese (Milk, Cultures, Salt, Enzymes), Broccoli, Bacon (Pork, Water, Salt, Sugar, Sodium Phosphate, Sodium Erythorbate, Sodium Nitrite), Butter (Pasteurized Cream, Natural Flavors), Grated Romano Cheese Topping (Romano Cheese [Milk, Culture, Salt, Enzymes], Water, Milk Protein, Modified Food Starch, Palm Oil, Salt, Disodium Phosphate, Citric Acid, Guar Gum, Powdered Cellulose, Calcium Propionate [preservative]), Butter (Pasteurized Cream, Natural Flavorings), Onion Powder, Garlic Powder, Sodium Citrate, Salt, Guar Gum, Spice, Dried Bay Leaf.

### Allergens

Contains Milk, Wheat

### Suggested Accompaniments

None

## Nutrition Facts

10 servings per container  
**Serving size** 1 kit (469g)

**Amount per serving**  
**Calories** 1450  
% Daily Value\*

<b>Total Fat</b> 109g	<b>140%</b>
Saturated Fat 60g	<b>300%</b>
Trans Fat 0.5g	
<b>Cholesterol</b> 390mg	<b>130%</b>
<b>Sodium</b> 1640mg	<b>71%</b>
<b>Total Carbohydrate</b> 78g	<b>28%</b>
Dietary Fiber 5g	<b>18%</b>
Total Sugars 16g	
Includes 0g Added Sugars	<b>0%</b>
<b>Protein</b> 43g	
<b>Vitamin D</b> 1.3mcg	<b>6%</b>
<b>Calcium</b> 530mg	<b>40%</b>
<b>Iron</b> 3.4mg	<b>20%</b>
<b>Potassium</b> 490mg	<b>10%</b>

\*The % Daily Value tells you how much a nutrient in a serving of food contributes to a daily diet. 2,000 calories a day is used for general nutrition advice.

### Notes

- Our dishes are made in kitchens, in cooking processes, and on equipment shared with milk, eggs, fish, shellfish, peanuts, tree nuts, wheat, soy, and sesame. Fried items are prepared in shared frying oil. Our gluten-free items are not suitable for individuals with celiac disease or severe gluten sensitivity.
- Suggested accompaniments are not included in the Ingredient, Allergen and Nutritional Facts List.

# Chicken Parmigiana

## PRODUCT INFORMATION

<b>Distributed by</b>	<b>SKU</b>
Wonder Group, Inc	8806789
New York, NY 10006	<b>UPC</b>
<b>GTIN</b>	850052739331
00850052739331	<b>Storage Method</b>
<b>Cook Method</b>	Frozen at 0°F
Cook when defrosted. Cook at 475°F in TurboChef double batch oven	<b>Shelf Life - Frozen</b>
<b>Cook Time</b>	180 days
6:00 minutes (4:00 / 2:00)	<b>Shelf Life - Defrosted</b>
<b>Required Smallware</b>	3 days
Solid mat, spatula, tongs, kitchen scissors	<b>Defrost Time Before Cooking</b>
	24 hours

## SHIPPING INFORMATION

<b>Item Weight</b>	<b>Case Cube</b>
350g	0.97 cu ft
<b>Item Quantity in Case</b>	<b>Case Dimensions</b>
10 units/tins per case	12.88" x 9.50" x 13.75"
<b>Case Net Weight</b>	<b>Case TI-HI</b>
7.72 lbs	15 x 4
<b>Case Gross Weight</b>	<b>Pallet Gross Weight</b>
9.93 lbs	635.57 lbs
<b>Cases Per Pallet</b>	
60	

## INGREDIENT LIST

<b>Ingredients</b>
Whole Peeled Tomatoes (Whole Peeled Tomatoes, Tomato Juice, Salt, Citric Acid, Basil), Chicken, Mozzarella & Provolone Cheese Blend (Whole Milk Low Moisture Mozzarella Cheese [Pasteurized Milk, Cheese Cultures, Salt, Enzymes], Provolone Cheese [Pasteurized Milk, Cheese Cultures, Salt, Enzymes]), Potato Starch, Canola Oil, Cellulose Powder [To Prevent Caking], Dextrose, Natamycin [Mold Inhibitor]), Canola Oil, Seasoned Breadcrumbs (Enriched Flour [Wheat Flour, Malted Barley Flour, Niacin, Reduced Iron, Thiamin Mononitrate, Riboflavin, Folic Acid], Water, High Fructose Corn Syrup, Yeast, Salt, Vegetable Oil [Soybean and/or Cottonseed and/or Canola], Sugar, 2% or less of Wheat Gluten, Dextrose, Soy Flour, Whey, Calcium Propionate [preservative], Sodium Stearoyl Lactylate, Mono- and Diglycerides, Soy Lecithin, Molasses, Honey, Whole Wheat Flour, White Corn Flour, White Corn Meal, Citric Acid, Vinegar, Wheat Starch, Cornstarch, Potato Flour, Rice Flour, Wheat Bran, Oat Hull Fiber, Calcium Sulfate, DATEM, Potassium Iodate, Guar Gum, Calcium Phosphate, Enrichment [Vitamin E Acetate, Vitamin A Palmitate, Vitamin D3], Lactic Acid, Ascorbic Acid, Paprika, Annatto, Sesame), Liquid Egg White (Egg Whites, Guar Gum, Triethyl Citrate), Enriched Bleached Flour (Bleached Wheat Flour, Malted Barley Flour, Niacin, Reduced Iron, Thiamine Mononitrate, Riboflavin, Folic Acid), Batter Mix (Wheat Flour, Sugar, Salt, Leavening [Sodium Acid Pyrophosphate, Sodium Bicarbonate], Monosodium Glutamate, Spice, Nonfat Milk, Soybean Oil [as a processing aid], Paprika Extract, Turmeric Extract, Guar Gum, Natural Flavor), Olive Oil, Grated Romano Cheese Topping (Romano Cheese [Milk, Culture, Salt, Enzymes], Water, Milk Protein, Modified Food Starch, Palm Oil, Salt, Disodium Phosphate, Citric Acid, Guar Gum, Powdered Cellulose, Calcium Propionate [preservative]), Panko Breadcrumbs (Bleached Wheat Flour, Dextrose, Yeast, Salt), Cornstarch, Water, Salt, Sugar, Garlic Powder, Onion Powder, Basil, Spice, Oregano, Garlic, Guar Gum
<b>Allergens</b>
Contains Egg, Milk, Sesame, Soy, Wheat
<b>Suggested Accompaniments</b>
Fresh basil



## Nutrition Facts

10 servings per container	
<b>Serving size</b>	<b>1 Kit (350g)</b>
<b>Amount per serving</b>	
<b>Calories</b>	<b>640</b>
	<b>% Daily Value*</b>
<b>Total Fat 37g</b>	<b>47%</b>
Saturated Fat 11g	<b>55%</b>
Trans Fat 0g	
<b>Cholesterol 115mg</b>	<b>38%</b>
<b>Sodium 1370mg</b>	<b>60%</b>
<b>Total Carbohydrate 31g</b>	<b>11%</b>
Dietary Fiber 2g	<b>7%</b>
Total Sugars 6g	
Includes 2g Added Sugars	<b>4%</b>
<b>Protein 46g</b>	
Vitamin D 0mcg	<b>0%</b>
Calcium 380mg	<b>30%</b>
Iron 1.4mg	<b>8%</b>
Potassium 440mg	<b>10%</b>
*The % Daily Value tells you how much a nutrient in a serving of food contributes to a daily diet. 2,000 calories a day is used for general nutrition advice.	

- Notes**
- Our dishes are made in kitchens, in cooking processes, and on equipment shared with milk, eggs, fish, shellfish, peanuts, tree nuts, wheat, soy, and sesame. Fried items are prepared in shared frying oil. Our gluten-free items are not suitable for individuals with celiac disease or severe gluten sensitivity.
  - Suggested accompaniments are not included in the Ingredient, Allergen and Nutritional Facts List.



# Cheesesteak

## PRODUCT INFORMATION

<b>Distributed by</b> Wonder Group, Inc New York, NY 10006	<b>SKU</b> 8804084
<b>GTIN</b> 00850052739287	<b>UPC</b> 850052739287
<b>Cook Method</b> Cook when defrosted. Cook at 475°F in TurboChef double batch oven	<b>Storage Method</b> Frozen at 0°F
<b>Cook Time</b> 2:30 minutes	<b>Shelf Life - Frozen</b> 330 days
<b>Required Smallware</b> Mixing spoon, kitchen scissors	<b>Shelf Life - Defrosted</b> 3 days
	<b>Defrost Time Before Cooking</b> 24 hours



## SHIPPING INFORMATION

<b>Item Weight</b> 294g	<b>Case Cube</b> 0.97 cu ft
<b>Item Quantity in Case</b> 10 units/tins per case	<b>Case Dimensions</b> 12.88" x 9.50" x 13.75"
<b>Case Net Weight</b> 6.48 lbs	<b>Case TI-HI</b> 15 x 4
<b>Case Gross Weight</b> 8.69 lbs	<b>Pallet Gross Weight</b> 561.50 lbs
<b>Cases Per Pallet</b> 60	

## INGREDIENT LIST

### Ingredients

Seasoned Beef (Beef, Water, Hydrolyzed Soy Protein, Dextrose, Sodium Phosphate, Soy Protein Isolate, Modified Food Starch, Salt), Shredded Monterey Jack & Cheddar Cheese (Cheddar Cheese and Monterey Jack Cheese [Pasteurized Milk, Cheese Cultures, Salt, Enzymes, Annatto (color added when applicable)], Potato Starch, Corn Starch, Dextrose, Calcium Sulfate, Natamycin [mold inhibitor]), Whole Milk, Yellow Onion, Butter (Pasteurized Cream, Natural Flavors), Provolone Cheese (Cultured Milk, Enzymes, Salt), Pasteurized Recipe Cheese Product (Milk, Whey, Whey Protein Concentrate, Milkfat, Sodium Phosphate, Milk Protein Concentrate, Contains Less Than 2% of Salt, Calcium Phosphate, Sodium Alginate, Lactic Acid, Sorbic Acid [preservative], Cheese Culture, Enzymes, Apocarotenal and Annatto [color]), Sodium Citrate, Canola Oil, Salt, Spice.

### Allergens

Contains Milk, Soy

### Suggested Accompaniments

Cuban roll, mayonnaise

## Nutrition Facts

10 servings per container  
**Serving size** 1 Kit (294g)

**Amount per serving**  
**Calories** **550**

	% Daily Value*
<b>Total Fat</b> 40g	<b>51%</b>
Saturated Fat 23g	<b>115%</b>
Trans Fat 0g	
<b>Cholesterol</b> 170mg	<b>57%</b>
<b>Sodium</b> 1250mg	<b>54%</b>
<b>Total Carbohydrate</b> 6g	<b>2%</b>
Dietary Fiber 1g	<b>4%</b>
Total Sugars 4g	
Includes 0g Added Sugars	<b>0%</b>
<b>Protein</b> 40g	
Vitamin D 1mcg	<b>6%</b>
Calcium 735mg	<b>60%</b>
Iron 1mg	<b>6%</b>
Potassium 432mg	<b>10%</b>

\*The % Daily Value tells you how much a nutrient in a serving of food contributes to a daily diet. 2,000 calories a day is used for general nutrition advice.

### Notes

- Our dishes are made in kitchens, in cooking processes, and on equipment shared with milk, eggs, fish, shellfish, peanuts, tree nuts, wheat, soy, and sesame. Fried items are prepared in shared frying oil. Our gluten-free items are not suitable for individuals with celiac disease or severe gluten sensitivity.
- Suggested accompaniments are not included in the Ingredient, Allergen and Nutritional Facts List.

# Smash Burger (DF)(GF)

## PRODUCT INFORMATION

<b>Distributed by</b> Wonder Group, Inc New York, NY 10006	<b>SKU</b> 8804098
<b>GTIN</b> 00850052739270	<b>UPC</b> 850052739270
<b>Cook Method</b> Cook when defrosted. Cook at 475°F in TurboChef double batch oven	<b>Storage Method</b> Frozen at 0°F
<b>Cook Time</b> 2:30 minutes	<b>Shelf Life - Frozen</b> 300 days
<b>Required Smallware</b> Spatula	<b>Shelf Life - Defrosted</b> 3 days
	<b>Defrost Time Before Cooking</b> 24 hours



## SHIPPING INFORMATION

<b>Item Weight</b> 150g	<b>Case Cube</b> 0.97 cu ft
<b>Item Quantity in Case</b> 10 units/tins per case	<b>Case Dimensions</b> 12.88" x 9.50" x 13.75"
<b>Case Net Weight</b> 3.31 lbs	<b>Case TI-HI</b> 15 x 4
<b>Case Gross Weight</b> 5.52 lbs	<b>Pallet Gross Weight</b> 371.02 lbs
<b>Cases Per Pallet</b> 60	

## INGREDIENT LIST

<b>Ingredients</b> Beef.
<b>Allergens</b> None
<b>Suggested Accompaniments</b> Burger bun, American cheese, dill pickle, mayonnaise, burger seasoning of choice

## Nutrition Facts

10 servings per container  
**Serving size** 1 kit/2 cooked patties (150 g)

**Amount per serving**  
**Calories** 680

	% Daily Value*
<b>Total Fat</b> 60g	<b>77%</b>
Saturated Fat 23g	<b>115%</b>
Trans Fat 3.5g	
<b>Cholesterol</b> 175mg	<b>58%</b>
<b>Sodium</b> 150mg	<b>7%</b>
<b>Total Carbohydrate</b> 0g	<b>0%</b>
Dietary Fiber 0g	<b>0%</b>
Total Sugars 0g	
Includes 0g Added Sugars	<b>0%</b>

<b>Protein</b> 32g	
Vitamin D 0.2mcg	<b>2%</b>
Calcium 50mg	<b>4%</b>
Iron 3.7mg	<b>20%</b>
Potassium 490mg	<b>10%</b>

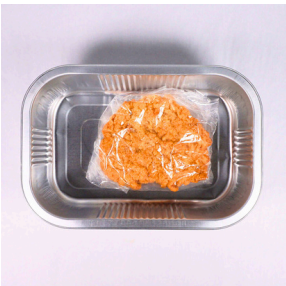
\*The % Daily Value tells you how much a nutrient in a serving of food contributes to a daily diet. 2,000 calories a day is used for general nutrition advice.

- Notes**
- Our dishes are made in kitchens, in cooking processes, and on equipment shared with milk, eggs, fish, shellfish, peanuts, tree nuts, wheat, soy, and sesame. Fried items are prepared in shared frying oil. Our gluten-free items are not suitable for individuals with celiac disease or severe gluten sensitivity.
  - Suggested accompaniments are not included in the Ingredient, Allergen and Nutritional Facts List.

# Crispy Chicken Filet

## PRODUCT INFORMATION

<b>Distributed by</b> Wonder Group, Inc New York, NY 10006	<b>SKU</b> 8806298
<b>GTIN</b> 00850052739515	<b>UPC</b> 850052739515
<b>Cook Method</b> Cook when defrosted. Cook at 475°F in TurboChef double batch oven	<b>Storage Method</b> Frozen at 0°F
<b>Cook Time</b> 5:00 minutes	<b>Shelf Life - Frozen</b> 180 days
<b>Required Smallware</b> Tongs	<b>Shelf Life - Defrosted</b> 3 days
	<b>Defrost Time Before Cooking</b> 24 hours



## SHIPPING INFORMATION

<b>Item Weight</b> 122g	<b>Case Cube</b> 0.97 cu ft
<b>Item Quantity in Case</b> 10 units/tins per case	<b>Case Dimensions</b> 12.88" x 9.50" x 13.75"
<b>Case Net Weight</b> 2.69 lbs	<b>Case TI-HI</b> 15 x 4
<b>Case Gross Weight</b> 4.90 lbs	<b>Pallet Gross Weight</b> 333.98 lbs
<b>Cases Per Pallet</b> 60	

## INGREDIENT LIST

### Ingredients

Chicken, Water, Batter Mix (Wheat Flour, Sugar, Salt, Leavening [Sodium Acid Pyrophosphate, Sodium Bicarbonate], Monosodium Glutamate, Spice, Nonfat Milk, Soybean Oil [as a processing aid], Paprika Extract, Turmeric Extract, Guar Gum, Natural Flavor), Canola Oil, Whole Eggs (Whole Eggs, Citric Acid [to preserve color]), Buttermilk (Cultured Pasteurized Reduced Fat Milk), Salt, Sugar, Cooking Spray (Sunflower Oil, Canola Oil, Sunflower Lecithin, Phosphated Mono and Diglycerides, Capric/Caprylic Triglycerides, Natural Flavor), Chicken Bouillon Powder (Salt, Maltodextrin, Sugar, Dehydrated Chicken Meat, Natural & Artificial Flavor, Yeast Extract, 2% or less of Chicken Fat, Disodium Inosinate, Disodium Guanylate, Acacia Gum, L-Cysteine, Thiamine Hydrochloride, Succinic Acid)

### Allergens

Contains Egg, Milk, Wheat

### Suggested Accompaniments

Potato roll, dill pickle, mayonnaise

## Nutrition Facts

10 servings per container  
**Serving size** 1 Fried and Breaded Chicken Breast (122g)

**Amount per serving**  
**Calories** 250

	% Daily Value*
<b>Total Fat</b> 14g	<b>18%</b>
Saturated Fat 1.5g	8%
Trans Fat 0g	
<b>Cholesterol</b> 75mg	<b>25%</b>
<b>Sodium</b> 740mg	<b>32%</b>
<b>Total Carbohydrate</b> 10g	<b>4%</b>
Dietary Fiber 0g	0%
Total Sugars 2g	
Includes 2g Added Sugars	4%
<b>Protein</b> 19g	

<b>Vitamin D</b> 0.9mcg	<b>4%</b>
<b>Calcium</b> 20mg	<b>2%</b>
<b>Iron</b> 0.7mg	<b>4%</b>
<b>Potassium</b> 280mg	<b>6%</b>

\*The % Daily Value tells you how much a nutrient in a serving of food contributes to a daily diet. 2,000 calories a day is used for general nutrition advice.

### Notes

- Our dishes are made in kitchens, in cooking processes, and on equipment shared with milk, eggs, fish, shellfish, peanuts, tree nuts, wheat, soy, and sesame. Fried items are prepared in shared frying oil. Our gluten-free items are not suitable for individuals with celiac disease or severe gluten sensitivity.
- Suggested accompaniments are not included in the Ingredient, Allergen and Nutritional Facts List.

# NY Strip (GF)

To Be Discontinued

## PRODUCT INFORMATION

### Distributed by

Wonder Group, Inc  
New York, NY 10006

### GTIN

00850052739218

### Cook Method

Cook when defrosted. Cook at 475°F in TurboChef double batch oven

### Cook Time

6:00 minutes (Medium Rare)  
7:00 minutes (Medium)  
8:00 minutes (Medium Well)  
9:00 minutes (Well Done)

### Required Smallware

Solid mat, carving knife, spatula, kitchen scissors

### SKU

8803993

### UPC

850052739218

### Storage Method

Frozen at 0°F

### Shelf Life - Frozen

365 days

### Shelf Life - Defrosted

3 days

### Defrost Time Before Cooking

24 hours



## SHIPPING INFORMATION

### Item Weight

404g

### Item Quantity in Case

10 units/tins per case

### Case Net Weight

8.91 lbs

### Case Gross Weight

11.12 lbs

### Cases Per Pallet

60

### Case Cube

0.97 cu ft

### Case Dimensions

12.88" x 9.50" x 13.75"

### Case TI-HI

15 x 4

### Pallet Gross Weight

707.00 lbs

## INGREDIENT LIST

### Ingredients

Beef, Clarified Butter (Pasteurized Cream), Canola Oil, Salt, Spice, Paprika.

### Allergens

Contains Milk

### Suggested Accompaniments

Steak sauce, sides from Wonder for Business menu

## Nutrition Facts

10 servings per container

Serving size 1 Kit (404g)

Amount per serving

**Calories 1200**

% Daily Value\*

Total Fat 98g 126%

Saturated Fat 42g 210%

Trans Fat 0g

Cholesterol 285mg 95%

Sodium 1120mg 49%

Total Carbohydrate 2g 1%

Dietary Fiber 1g 4%

Total Sugars 0g

Includes 0g Added Sugars 0%

**Protein 74g**

Vitamin D 0mcg 0%

Calcium 41mg 4%

Iron 7mg 40%

Potassium 1196mg 25%

\*The % Daily Value tells you how much a nutrient in a serving of food contributes to a daily diet. 2,000 calories a day is used for general nutrition advice.

### Notes

- Our dishes are made in kitchens, in cooking processes, and on equipment shared with milk, eggs, fish, shellfish, peanuts, tree nuts, wheat, soy, and sesame. Fried items are prepared in shared frying oil. Our gluten-free items are not suitable for individuals with celiac disease or severe gluten sensitivity.
- Suggested accompaniments are not included in the Ingredient, Allergen and Nutritional Facts List.



NY Strip (GF)

PRODUCT INFORMATION

<b>Distributed by</b> Wonder Group, Inc New York, NY 10006	<b>SKU</b> 8806851
<b>GTIN</b> 00850052739218	<b>UPC</b> 850052739218
<b>Cook Method</b> Cook when defrosted. Cook at 475°F in TurboChef double batch oven	<b>Storage Method</b> Frozen at 0°F
<b>Cook Time</b> 6:00 minutes (Medium Rare) 7:00 minutes (Medium) 8:00 minutes (Medium Well) 9:00 minutes (Well Done)	<b>Shelf Life - Frozen</b> 365 days
<b>Required Smallware</b> Solid mat, carving knife, spatula, kitchen scissors	<b>Shelf Life - Defrosted</b> 3 days
	<b>Defrost Time Before Cooking</b> 24 hours

SHIPPING INFORMATION

<b>Item Weight</b> 458g	<b>Case Cube</b> 0.97 cu ft
<b>Item Quantity in Case</b> 20 units per case	<b>Case Dimensions</b> 10.00" x 15.00" x 5.50"
<b>Case Net Weight</b> 20.19 lbs	<b>Case TI-HI</b> 8 x 7
<b>Case Gross Weight</b> 21.19 lbs	<b>Pallet Gross Weight</b> 1,226.88 lbs
<b>Cases Per Pallet</b> 56	

INGREDIENT LIST

<b>Ingredients</b> Fully Cooked Beef Strip Steak (Beef, Salt, Pepper).
<b>Allergens</b> None
<b>Suggested Accompaniments</b> Steak sauce, sides from Wonder for Business menu

Nutrition Facts	
20 servings per container	
Serving size	16 oz (458g)
Amount per serving	
Calories	1080
	% Daily Value*
Total Fat 78g	100%
Saturated Fat 31g	155%
Trans Fat 2.5g	
Cholesterol 370mg	123%
Sodium 1850mg	80%
Total Carbohydrate 0g	0%
Dietary Fiber 0g	0%
Total Sugars 0g	
Includes 0g Added Sugars	0%
Protein 88g	
Vitamin D 0mcg	0%
Calcium 30mg	2%
Iron 7.3mg	40%
Potassium 1370mg	30%
* The % Daily Value (DV) tells you how much a nutrient in a serving of food contributes to a daily diet. 2,000 calories a day is used for general nutrition advice.	

- Notes
- Our dishes are made in kitchens, in cooking processes, and on equipment shared with milk, eggs, fish, shellfish, peanuts, tree nuts, wheat, soy, and sesame. Fried items are prepared in shared frying oil. Our gluten-free items are not suitable for individuals with celiac disease or severe gluten sensitivity.
  - Suggested accompaniments are not included in the Ingredient, Allergen and Nutritional Facts List.

# Seared Sirloin (GF)

To Be Discontinued

## PRODUCT INFORMATION

### Distributed by

Wonder Group, Inc  
New York, NY 10006

### GTIN

00850052739379

### Cook Method

Cook when defrosted. Cook at 475°F in TurboChef double batch oven

### Cook Time

4:30 minutes (Medium Rare)  
5:30 minutes (Medium)  
6:30 minutes (Medium Well)  
7:30 minutes (Well Done)

### Required Smallware

Solid mat, carving knife, spatula, kitchen scissors

### SKU

8805369

### UPC

850052739379

### Storage Method

Frozen at 0°F

### Shelf Life - Frozen

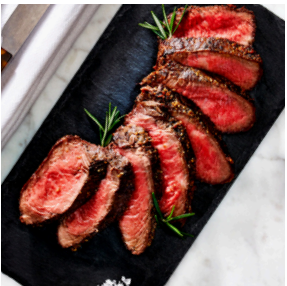
365 days

### Shelf Life - Defrosted

3 days

### Defrost Time Before Cooking

24 hours



## SHIPPING INFORMATION

### Item Weight

236g

### Item Quantity in Case

10 units/tins per case

### Case Net Weight

5.20 lbs

### Case Gross Weight

7.41 lbs

### Cases Per Pallet

60

### Case Cube

0.97 cu ft

### Case Dimensions

12.88" x 9.50" x 13.75"

### Case TI-HI

15 x 4

### Pallet Gross Weight

484.77 lbs

## INGREDIENT LIST

### Ingredients

Beef, Clarified Butter (Pasteurized Cream), Canola Oil, Seasoning Blend (Salt, Spices [Including Black Pepper, Red Pepper], Garlic, Onion, Sunflower Oil, Natural Flavor, Extractives Of Paprika), Salt, Spice.

### Allergens

None

### Suggested Accompaniments

Steak sauce, sides from Wonder for Business menu

## Nutrition Facts

10 servings per container

Serving size 1 Kit (236g)

Amount per serving

**Calories 480**

% Daily Value\*

Total Fat 25g 32%

Saturated Fat 10g 50%

Trans Fat 0.5g

Cholesterol 185mg 62%

Sodium 1780mg 77%

Total Carbohydrate 0g 0%

Dietary Fiber 0g 0%

Total Sugars 0g

Includes 0g Added Sugars 0%

**Protein 66g**

Vitamin D 0mcg 0%

Calcium 15mg 2%

Iron 7mg 40%

Potassium 848mg 20%

\*The % Daily Value tells you how much a nutrient in a serving of food contributes to a daily diet. 2,000 calories a day is used for general nutrition advice.

### Notes

- Our dishes are made in kitchens, in cooking processes, and on equipment shared with milk, eggs, fish, shellfish, peanuts, tree nuts, wheat, soy, and sesame. Fried items are prepared in shared frying oil. Our gluten-free items are not suitable for individuals with celiac disease or severe gluten sensitivity.
- Suggested accompaniments are not included in the Ingredient, Allergen and Nutritional Facts List.

Seared Sirloin (GF)

PRODUCT INFORMATION

<b>Distributed by</b> Wonder Group, Inc New York, NY 10006	<b>SKU</b> 8806846
<b>GTIN</b> 00850052739379	<b>UPC</b> 850052739379
<b>Cook Method</b> Cook when defrosted. Cook at 475°F in TurboChef double batch oven	<b>Storage Method</b> Frozen at 0°F
<b>Cook Time</b> 4:30 minutes (Medium Rare) 5:30 minutes (Medium) 6:30 minutes (Medium Well) 7:30 minutes (Well Done)	<b>Shelf Life - Frozen</b> 365 days
	<b>Shelf Life - Defrosted</b> 3 days
<b>Required Smallware</b> Solid mat, carving knife, spatula, kitchen scissors	<b>Defrost Time Before Cooking</b> 24 hours

SHIPPING INFORMATION

<b>Item Weight</b> 283g	<b>Case Cube</b> 0.48 cu ft
<b>Item Quantity in Case</b> 20 units per case	<b>Case Dimensions</b> 10.00" x 15.00" x 5.50"
<b>Case Net Weight</b> 12.48 lbs	<b>Case TI-HI</b> 8 x 7
<b>Case Gross Weight</b> 13.48 lbs	<b>Pallet Gross Weight</b> 794.78 lbs
<b>Cases Per Pallet</b> 56	

INGREDIENT LIST

<b>Ingredients</b> Fully Cooked Beef Sirloin Steak (Beef, Salt, Pepper, Brown Sugar)
<b>Allergens</b> None
<b>Suggested Accompaniments</b> Steak sauce, sides from Wonder for Business menu

Nutrition Facts	
20 servings per container	
Serving size	10 oz (283g)
Amount per serving	
Calories	370
	% Daily Value*
Total Fat 12g	15%
Saturated Fat 4g	20%
Trans Fat 0.5g	
Cholesterol 190mg	63%
Sodium 1320mg	57%
Total Carbohydrate 1g	0%
Dietary Fiber 0g	0%
Total Sugars 1g	
Includes 1g Added Sugars	2%
Protein 64g	
Vitamin D 0.3mcg	0%
Calcium 20mg	0%
Iron 6.3mg	35%
Potassium 1110mg	25%
* The % Daily Value (DV) tells you how much a nutrient in a serving of food contributes to a daily diet. 2,000 calories a day is used for general nutrition advice.	

- Notes
- Our dishes are made in kitchens, in cooking processes, and on equipment shared with milk, eggs, fish, shellfish, peanuts, tree nuts, wheat, soy, and sesame. Fried items are prepared in shared frying oil. Our gluten-free items are not suitable for individuals with celiac disease or severe gluten sensitivity.
  - Suggested accompaniments are not included in the Ingredient, Allergen and Nutritional Facts List.

# Bacon, Egg & Cheese Sandwich

## PRODUCT INFORMATION

<b>Distributed by</b>	<b>SKU</b>
Wonder Group, Inc	8805777
New York, NY 10006	
<b>GTIN</b>	<b>UPC</b>
00850052739485	850052739485
<b>Cook Method</b>	<b>Storage Method</b>
Cook when defrosted. Cook at 475°F in TurboChef double batch oven	Frozen at 0°F
	<b>Shelf Life - Frozen</b>
	365 days
<b>Cook Time</b>	<b>Shelf Life - Defrosted</b>
2:30 minutes	3 days
0:30 minutes (bread only)	
<b>Required Smallware</b>	<b>Defrost Time Before Cooking</b>
Solid mat, perforated mat, spatula	24 hours



## SHIPPING INFORMATION

<b>Item Weight</b>	<b>Case Cube</b>
183g (2 units/tin)	0.97 cu ft
<b>Item Quantity in Case</b>	<b>Case Dimensions</b>
10 tins (20 units) per case	12.88" x 9.50" x 13.75"
<b>Case Net Weight</b>	<b>Case TI-HI</b>
8.07 lbs	15 x 4
<b>Case Gross Weight</b>	<b>Pallet Gross Weight</b>
10.28 lbs	656.74 lbs
<b>Cases Per Pallet</b>	
60	

## INGREDIENT LIST

### Ingredients

Muffin (Flour, Enriched Flour [Niacin, Reduced Iron, Thiamine Mononitrate, Riboflavin, Folic Acid, Calcium Propionate], Malted Barley Flour, Water, Sugar, Eggs, Milk, Butter, Salt, Yeast), Egg Yolk, Bacon (Pork, Water, Salt, Sugar, Sodium Phosphate, Sodium Erythorbate, Sodium Nitrite), Shredded Cheddar Cheese (Cheddar Cheese [Cultured Milk, Salt, Enzymes, Annatto (color)], Potato Starch [added to prevent caking], Natamycin [mold inhibitor]), Heavy Cream (Cream, Milk, Carrageenan, Mono and Diglycerides, Cellulose Gum, Polysorbate 80), Dijon Mustard (Water, Mustard Seed, Distilled Vinegar, Salt, Citric Acid, Sodium Metabisulfite [to protect quality]), Honey, Salt, Cooking Spray (Sunflower Oil, Canola Oil, Sunflower Lecithin, Phosphated Mono and Diglycerides, Capric/Caprylic Triglycerides, Natural Flavor), Whole Black Pepper.

### Allergens

Contains Egg, Milk, Wheat

### Suggested Accompaniments

None

## Nutrition Facts

20 servings per container  
Serving size 1 sandwich (183g)

Amount per serving

**Calories 630**

% Daily Value\*

Total Fat 32g 41%

Saturated Fat 13g 65%

Trans Fat 0g

Cholesterol 480mg 160%

Sodium 1050mg 46%

Total Carbohydrate 56g 20%

Dietary Fiber 2g 7%

Total Sugars 14g

Includes 13g Added Sugars 26%

Protein 26g

Vitamin D 2.6mcg 15%

Calcium 260mg 20%

Iron 2.7mg 15%

Potassium 210mg 4%

\*The % Daily Value tells you how much a nutrient in a serving of food contributes to a daily diet. 2,000 calories a day is used for general nutrition advice.

### Notes

- Our dishes are made in kitchens, in cooking processes, and on equipment shared with milk, eggs, fish, shellfish, peanuts, tree nuts, wheat, soy, and sesame. Fried items are prepared in shared frying oil. Our gluten-free items are not suitable for individuals with celiac disease or severe gluten sensitivity.
- Suggested accompaniments are not included in the Ingredient, Allergen and Nutritional Facts List.



# Vegetarian Sandwich (VG)

## PRODUCT INFORMATION

<b>Distributed by</b>	<b>SKU</b>
Wonder Group, Inc	8805528
New York, NY 10006	<b>UPC</b>
<b>GTIN</b>	850052739492
00850052739492	<b>Storage Method</b>
<b>Cook Method</b>	Frozen at 0°F
Cook when defrosted. Cook at 475°F in TurboChef double batch oven	<b>Shelf Life - Frozen</b>
<b>Cook Time</b>	330 days
2:30 minutes	<b>Shelf Life - Defrosted</b>
0:30 minutes (bread only)	3 days
<b>Required Smallware</b>	<b>Defrost Time Before Cooking</b>
Solid mat, perforated mat, spatula	24 hours



## SHIPPING INFORMATION

<b>Item Weight</b>	<b>Case Cube</b>
206g	0.97 cu ft
<b>Item Quantity in Case</b>	<b>Case Dimensions</b>
10 units/tins per case	12.88" x 9.50" x 13.75"
<b>Case Net Weight</b>	<b>Case TI-HI</b>
4.54 lbs	15 x 4
<b>Case Gross Weight</b>	<b>Pallet Gross Weight</b>
6.75 lbs	445.09 lbs
<b>Cases Per Pallet</b>	
60	

## INGREDIENT LIST

### Ingredients

Egg Yolk, Whole Wheat Roll (Whole Wheat Flour, Water, Yeast, Wheat Gluten, Wheat Bran, Sugar, Cellulose Fiber, Polydextrose, Salt, Vegetable Oil [Soybean], Preservatives [Calcium Propionate, Sorbic Acid], Monoglycerides, DATEM, Citric Acid, Cellulose Gum, Xanthan Gum, Reb A [Stevia Leaf Sweetener], Soy Lecithin, Sesame Seeds), Shredded Cheddar Cheese (Cheddar Cheese [Cultured Milk, Salt, Enzymes, Annatto (color)], Potato Starch [added to prevent caking], Natamycin [mold inhibitor]), Cremini Mushroom, Orange Juice, Water, Yellow Onion, Heavy Cream (Cream, Milk, Carrageenan, Mono and Diglycerides, Cellulose Gum, Polysorbate 80), Sunflower Oil, Tamari Soy Sauce (Water, Soybeans, Salt, Sugar), Sunflower Seed, Beets, Chickpea Flour, Parboiled Brown Rice, Carrot, Toasted Sesame Seed, Prepared Piquillo Peppers (Piquillo Pepper, Water, Sugar, Salt, Citric Acid, Calcium Chloride), Roasted Red Bell Peppers (Roasted Red Peppers, Water, Red Wine Vinegar, Salt, Grape Must), Methylcellulose, Natural Grilled Beef Burger Type Flavor (Baker's Yeast Extract, Salt, Dextrose, Natural Flavor), Lemon Juice, Canola Oil, Salt, Olive Oil, Cooking Spray (Sunflower Oil, Canola Oil, Sunflower Lecithin, Phosphated Mono and Diglycerides, Capric/Caprylic Triglycerides, Natural Flavor), Chipotle Paste (Water, Tomato Paste, Chipotle Peppers, 2% of less of Corn Oil, Modified Food Starch, Distilled Vinegar, Salt, Spices, Dehydrated Garlic, Dehydrated Onion), Paprika, Garlic, Spice, Aleppo Pepper, Garlic Powder, Dried Bay Leaf.

### Allergens

Contains Egg, Milk, Sesame, Soy, Wheat

### Suggested Accompaniments

Arugula

Nutrition Facts	
10 servings per container	
Serving size 1 sandwich (206g)	
Amount per serving	
<b>Calories</b>	<b>520</b>
	% Daily Value*
<b>Total Fat</b> 35g	<b>45%</b>
Saturated Fat 11g	<b>55%</b>
Trans Fat 0g	
<b>Cholesterol</b> 430mg	<b>143%</b>
<b>Sodium</b> 1120mg	<b>49%</b>
<b>Total Carbohydrate</b> 37g	<b>13%</b>
Dietary Fiber 10g	<b>36%</b>
Total Sugars 5g	
Includes 2g Added Sugars	<b>4%</b>
<b>Protein</b> 20g	
<b>Vitamin D</b> 2mcg	<b>10%</b>
<b>Calcium</b> 242mg	<b>20%</b>
<b>Iron</b> 4mg	<b>20%</b>
<b>Potassium</b> 415mg	<b>8%</b>
*The % Daily Value tells you how much a nutrient in a serving of food contributes to a daily diet. 2,000 calories a day is used for general nutrition advice.	

### Notes

- Our dishes are made in kitchens, in cooking processes, and on equipment shared with milk, eggs, fish, shellfish, peanuts, tree nuts, wheat, soy, and sesame. Fried items are prepared in shared frying oil. Our gluten-free items are not suitable for individuals with celiac disease or severe gluten sensitivity.
- Suggested accompaniments are not included in the Ingredient, Allergen and Nutritional Facts List.

# Premium 10" Pizzas Packaging

## PACKING INFORMATION

**Box Size**  
11" x 11.50" x 12"

**Pallet Used**  
48" x 40"

**Recommended Stacking Configuration**  
4 x 3 x 6

## DISHES IN 10" PIZZA PACKAGING

Item	Item Qty Per Case	Case Net Weight (lbs)	Case Gross Weight (lbs)	Cases Per Pallet	Pallet Gross Weight (lbs)
Premium 10" Cheese	15	11.50	13.70	72	1,026.40
Premium 10" Pepperoni	15	13.15	15.70	72	1,170.40

## STACKING NOTES

- DO NOT STACK more than 6 boxes in a single stack (max load for bottom box is 40lbs).
- DO NOT EXCEED more than 4 boxes in a row on the long side of the pallet, and no more than 3 boxes in a row on the short side of the pallet. Exceeding these requirements will cause overhang and can result in boxes and content getting damaged.
- The maximum capacity of a standard 48" x 40" pallet for this SKU is 72 boxes (6 stacks of 12 boxes per stack).
- DO NOT DOUBLE STACK PALLETS.

# 10" Pizzas Packaging

## PACKING INFORMATION

**Box Size**  
10.75" x 10.75" x 8"

**Pallet Used**  
48" x 40"

**Recommended Stacking Configuration**  
4 x 3 x 7

## DISHES IN 10" PIZZA PACKAGING

Item	Item Qty Per Case	Case Net Weight (lbs)	Case Gross Weight (lbs)	Cases Per Pallet	Pallet Gross Weight (lbs)
10" Cheese	10	6.73	7.66	84	683.23
10" Pepperoni	10	7.83	8.76	84	775.63

## STACKING NOTES

- DO NOT STACK more than 7 boxes in a single stack (max load for bottom box is 40lbs).
- DO NOT EXCEED more than 4 boxes in a row on the long side of the pallet, and no more than 3 boxes in a row on the short side of the pallet. Exceeding these requirements will cause overhang and can result in boxes and content getting damaged.
- The maximum capacity of a standard 48" x 40" pallet for this SKU is 84 boxes (7 stacks of 12 boxes per stack).
- DO NOT DOUBLE STACK PALLETS.

# 16" Pizzas Packaging

## PACKING INFORMATION

**Box Size**  
16.75" x 16.75" x 12"

**Pallet Used**  
48" x 40"

**Recommended Stacking Configuration**  
2 x 2 x 5

## DISHES IN 16" PIZZA PACKAGING

Item	Item Qty Per Case	Case Net Weight (lbs)	Case Gross Weight (lbs)	Cases Per Pallet	Pallet Gross Weight (lbs)
16" Cheese	10	18.08	22.41	20	488.24
16" Pepperoni	10	20.72	25.06	20	541.15
16" Di Fara Cheese	10	20.64	24.97	20	539.39
16" Di Fara Pepperoni	10	22.75	27.09	20	581.72

## STACKING NOTES

- DO NOT STACK more than 5 boxes in a single stack (max load for bottom box is 40lbs.).
- DO NOT EXCEED more than 2 boxes in a row. Exceeding these requirements will cause overhang and can result in boxes and content getting damaged.
- The maximum capacity of a standard 48" x 40" pallet for this SKU is 20 boxes (4 stacks of 5 boxes per stack).
- DO NOT DOUBLE STACK PALLETS.



# Deep Aluminum Tin

## SIZING INFORMATION

- 10 deep aluminum tins per case
- Tin Dimensions: 5.90" x 8.66" x 2.36"
- Case Dimensions:
  - ID: 12.375" x 9" x 12.75"
  - OD: 12.875" x 9.50" x 13.75"
- Tier Sheet Dimensions: 12" x 8.625"
- Tare Weight per Case: 2.21 lbs

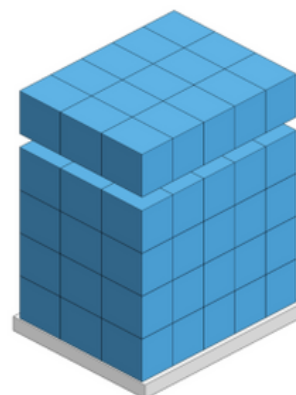


## PACKING INFORMATION

- 60 cases per pallet
- Pallet Pattern:
  - 15 cases per layer
  - 4 layers high
  - Column stacked to maximize strength
- Case Net Weight per Pallet: ~675 lbs.
- Compression: The bottom case will be subject to ~48 lbs. of dynamic compression
- Dunnage:
  - Corrugate tier sheets be placed between each layer of kits for 4 sheets per case
  - Case height includes corrugate sheets
- Surface Usage: 97.1%
- Volume Usage: 94.2%
- Pallet must be stretch wrapped a minimum of 3 times and anchored to pallet
- Box size: 12.88" x 9.50" x 13.75"
- Pallet used: 48" x 40"
- Recommended stacking configuration: 5 x 3 x 4

## STACKING NOTES

- DO NOT STACK more than 4 boxes in a single stack (max load for bottom box is 40lbs).
- DO NOT EXCEED more than 5 boxes in a row on the long side of the pallet, and no more than 4 boxes in a row on the short side of the pallet. Exceeding these requirements will cause overhang and can result in boxes and content getting damaged.
- The maximum capacity of a standard 48" x 40" pallet for this SKU is 60 boxes (4 stacks of 15 boxes per stack).
- DO NOT DOUBLE STACK PALLETS.



## DISHES IN DEEP ALUMINUM TIN

Item	Type	Item Qty Per Case	Case Net Weight (lbs)	Case Gross Weight (lbs)	Cases Per Pallet	Pallet Gross Weight (lbs)
Crispy Chicken Wings	Small Plates	10	5.73	7.94	60	516.52
Chicken Tenders	Small Plates	10	3.70	5.91	60	394.83
Crispy Brussels Sprouts	Small Plates	10	5.45	7.66	60	499.33
Cheese Quesadilla	Small Plates	10	6.61	8.82	60	569.43
French Fries	Small Plates	10	4.41	6.62	60	437.15
Garlic Breadsticks	Small Plates	10	1.90	4.11	60	286.36
Roasted Red Bliss Potatoes	Small Plates	10	5.00	7.21	60	472.87
Chicken Parmigiana	Entrées	10	7.72	9.93	60	635.57
Cheesesteak	Entrées	10	6.48	8.69	60	561.50
Smash Burger	Entrées	10	3.31	5.52	60	371.02
Crispy Chicken Filet	Entrées	10	2.69	4.90	60	333.98
Rigatoni Pomodoro	Pasta	10	8.47	10.68	60	680.55
Rigatoni Bolognese	Pasta	10	9.57	11.78	60	746.68
Penne alla Vodka	Pasta	10	9.57	11.78	60	746.68
Cavatappi Alfredo	Pasta	10	10.34	12.55	60	792.98
Bacon, Egg & Cheese Sandwich	Breakfast	20 units in 10 tins	8.07	10.28	60	656.74
Vegetarian Sandwich	Breakfast	10	4.54	6.75	60	445.09

# Dishes Packaged Without Tins

## DISHES PACKED IN BULK - WITHOUT DEEP TINS

Item	Item Qty Per Case	Case Net Weight (lbs)	Case Gross Weight (lbs)	Cases Per Pallet	Pallet Gross Weight (lbs)	Box Size	TI-HI
NY Strip	9	9.09	10.09	56	604.90	10.00" x 15.00" x 5.50"	8 X 7
Seared Sirloin	14	8.73	9.73	56	585.14	10.00" x 15.00" x 5.50"	8 X 7
White Cheddar Mac & Cheese	18	15.87	17.62	60	1,097.18	12.88" x 9.50" x 13.75"	15 X 4

*Wonder*

• FOR BUSINESS •

---

[BUSINESS@WONDER.COM](mailto:BUSINESS@WONDER.COM)

---

---

[BUSINESS.WONDER.COM](https://BUSINESS.WONDER.COM)

---